

По вопросам продаж и поддержки обращайтесь :

Алматы (7273)495-231  
Ангарск (3955)60-70-56  
Архангельск (8182)63-90-72  
Астрахань (8512)99-46-04  
Барнаул (3852)73-04-60  
Белгород (4722)40-23-64  
Благовещенск (4162)22-76-07  
Брянск (4832)59-03-52  
Владивосток (423)249-28-31  
Владикавказ (8672)28-90-48  
Владимир (4922)49-43-18  
Волгоград (844)278-03-48  
Вологда (8172)26-41-59  
Воронеж (473)204-51-73  
Екатеринбург (343)384-55-89

Иваново (4932)77-34-06  
Ижевск (3412)26-03-58  
Иркутск (395)279-98-46  
Казань (843)206-01-48  
Калининград (4012)72-03-81  
Калуга (4842)92-23-67  
Кемерово (3842)65-04-62  
Киров (8332)68-02-04  
Коломна (4966)23-41-49  
Кострома (4942)77-07-48  
Краснодар (861)203-40-90  
Красноярск (391)204-63-61  
Курган (3522)50-90-47  
Курск (4712)77-13-04  
Липецк (4742)52-20-81

Магнитогорск (3519)55-03-13  
Москва (495)268-04-70  
Мурманск (8152)59-64-93  
Набережные Челны (8552)20-53-41  
Нижний Новгород (831)429-08-12  
Новокузнецк (3843)20-46-81  
Новосибирск (383)227-86-73  
Ноябрьск (3496)41-32-12  
Омск (3812)21-46-40  
Орел (4862)44-53-42  
Оренбург (3532)37-68-04  
Пенза (8412)22-31-16  
Пермь (342)205-81-47  
Петрозаводск (8142)55-98-37  
Псков (8112)59-10-37

Ростов-на-Дону (863)308-18-15  
Рязань (4912)46-61-64  
Самара (846)206-03-16  
Санкт-Петербург (812)309-46-40  
Саранск (8342)22-96-24  
Саратов (845)249-38-78  
Севастополь (8692)22-31-93  
Симферополь (3652)67-13-56  
Смоленск (4812)29-41-54  
Сочи (862)225-72-31  
Ставрополь (8652)20-65-13  
Сургут (3462)77-98-35  
Сыктывкар (8212)25-95-17  
Тамбов (4752)50-40-97  
Тверь (4822)63-31-35

Тольятти (8482)63-91-07  
Томск (3822)98-41-53  
Тула (4872)33-79-87  
Тюмень (3452)66-21-18  
Улан-Удэ (3012)59-97-51  
Ульяновск (8422)24-23-59  
Уфа (347)229-48-12  
Хабаровск (4212)92-98-04  
Чебоксары (8352)28-53-07  
Челябинск (351)202-03-61  
Череповец (8202)49-02-64  
Чита (3022)38-34-83  
Якутск (4112)23-90-97  
Ярославль (4852)69-52-93

Россия +7(495)268-04-70

Казахстан +7(7172)727-132

Киргизия +996(312)96-26-47

yne@nt-rt.ru || <https://yuken.nt-rt.ru>

# ACCESSORIES & OTHERS

- Air Bleed Valves ..... page L-2
- List of Accessories ..... page L-2
- Pipe Flange Kits ..... page L-3
- CONTAMIKIT (Microscopic Inspection Device) ..... page L-6

## Air Bleed Valves

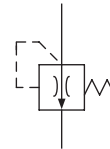
These air bleed valves are designed to use, at the start-up of the pumps, to bleed off the air enclosed in the suction line or the other lines in the system.

### Specifications

Model Numbers	ST 1004-2-1002	ST 1004-5-10	ST 1004-10-10
Descriptions			
Port Size	Rc 3/8 Thd.		
Max. Operating Pressure	25 MPa		
Reseating Pressure	0.15 MPa		
Cracking Pressure	0.34 MPa		
Flow Rate to Reseating	2 L/min	5 L/min	10 L/min
Range of Usage to Pump Output Flow	For Under 20 L/min	For 20 to 75 L/min	For Over 75 L/min



Graphic Symbol



## List of Accessories

The following accessories are also available for hydraulic system.  
Please consult us for details.

### Control Valves

- Low Pressure Stop Valves / Check Valves
- High Pressure Stop Valves
- Accumulator Stop Valves
- Maintenance Valves
- Throttle Valves / Throttle and Check Valves
- Flow Dividing / Combining Valves
- Water Solenoid Valves
- Automatic Water Supply Valves with A Temperature Detector
- No-Leakage Type Directional Valves
- Air Bleed Valves

### Filters

- Air Breather
- Strainer (Immersion Type Reservoir Filters)
- Suction Filters
- Line Filters
- Return Filters
- Magnet Separator

### Accumulators

### Oil Coolers

- Air-Cooling Coolers
- Water-Cooling Coolers

### Heaters

### Gauge, Switch etc.

- Pressure Gauge / Damper
- Gauge Isolator
- Pressure Exchanger
- Pressure Sensor
- Pressure Switch
- Thermometer
- Thermo Switch
- Oil Level Gauge
- Level Switch
- Flow Meter

### Rubber Hose & Fittings

- Rubber Hoses
- Self-Sealing Couplings
- Pipe Clamp

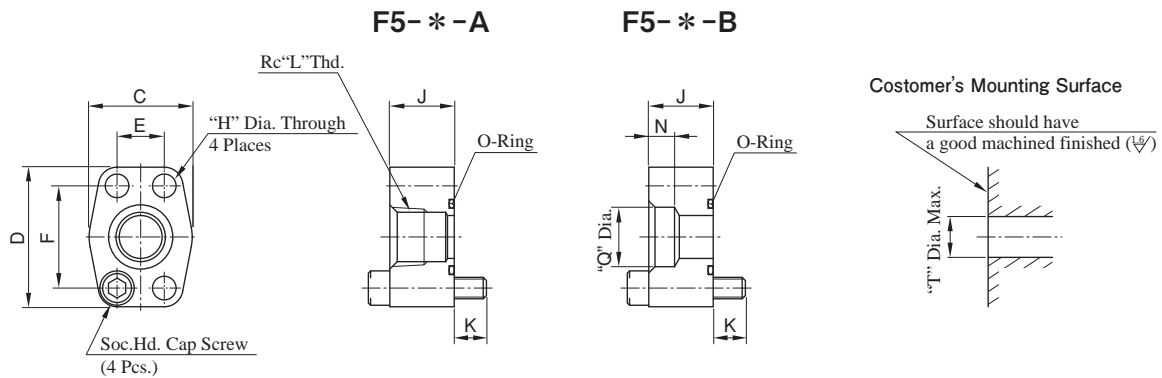
### Shaft Couplings

## 4 Bolt Solid Flanges (SAE) “F5” Series Pipe Flange Kits

The dimensions of the flange mounting surface are based upon SAE 4 Bolt Split Flange (Standard Pressure Series).

### Model Number Designation

F5	-06	-A	-10
Series Number	Flange Size	Type of Pipe Connection	Design Standards
F5	Refer to below table	A : Threaded Connection B : Socket Welding C : Butt Welding	10

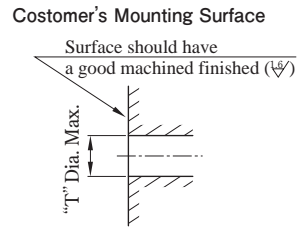
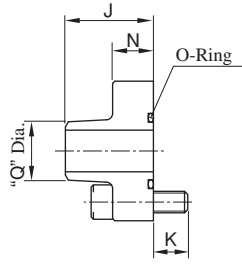
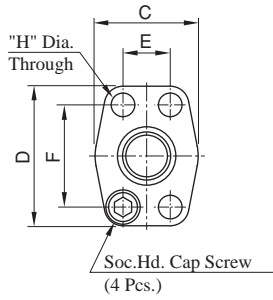


Kit Number	Piping Size	Dimension mm											O-Ring (OR NBR-90) P(G)* *-N/	Socket Head Cap Screw (4 Pcs.)	Max. Operating Pressure MPa	Approx. Mass kg	Tightening Torque Nm				
		C	D	E	F	H	J	K	L	N	Q	T					Recommendation	Tolerance			
F5-04W-A	3/8	40	54	17.5	38.1	8.8	30	10	3/8	-	-	13	P22	M 8 ×40	28	0.5	35				
F5-04W-B									-	9	17.8										
F5-04 -A	1/2	40	54	17.5	38.1	8.8	30	10	1/2	-	-	13	P22	M 8 ×40	28	0.5	35				
F5-04 -B									-	11	22.2										
F5-06 X-A	3/4	48	65	22.2	47.6	8.8	30	15	3/4	-	-	19	G30	M 8 ×45	28	0.7	68.5				
F5-06 X-B									-	12	27.7										
F5-06 -A						11	30	15	3/4	-	-	19	G30	M10×45	28	0.7					
F5-06 -B									-	12	27.7										
F5-08W-A	3/4	55	70	26.2	52.4	11	30	15	3/4	-	-	26	G35	M10×45	28	0.9	68.5				
F5-08W-B									-	12	27.7										
F5-08 -A	1	55	70	26.2	52.4	11	30	15	1	-	-	26	G35	M10×45	28	0.9	68.5				
F5-08 -B									-	14	34.5										
F5-10 -A	1 1/4	64	80	30.2	58.7	11	38	17	1 1/4	-	-	32	G40	M10×55	28	1.2	±10%				
F5-10 -B									-	16	43.2										
F5-12 -A	1 1/2	72	94	35.7	69.9	13.5	38	17	1 1/2	-	-	38	G50	M12×55	21	1.5	±10%				
F5-12 -B									-	18	49.1										
F5-16W-A	1 1/2	85	102	42.9	77.8	13.5	38	17	1 1/2	-	-	48	G60	M12×55	21	1.8	118				
F5-16W-B									-	18	49.1										
F5-16 -A									2	38	17	2	-	-	51	G65			M12×55	17.5	1.7
F5-16 -B												-	20	61.1							
F5-20 -A	2 1/2	102	114	50.8	88.9	13.5	48	17	2 1/2	-	-	63	G75	M12×65	17.5	2.0	±10%				
F5-20 -B									-	22	77.1										
F5-24 -A	3	116	135	61.9	106.4	17.5	53	17	3	-	-	76	G85	M16×70	3.5	2.7	±10%				
F5-24 -B									-	25	90.0										
F5-28 -A	3 1/2	134	153	69.9	120.7	17.5	53	17	3 1/2	-	-	88	G100	M16×70	3.5	3.4	287				
F5-28 -B									-	28	102.8										
F5-32 -A	4	150	162	77.8	130.2	17.5	53	17	4	-	-	101	G115	M16×70	3.5	3.7	±10%				
F5-32 -B									-	28	115.5										

★1. Approx. mass is the value including socket head cap screw (4 pcs.).

★2. The values of tightening torque above apply to when these flanges are used for pressure line.

### F5- \* -C



Kit Number	Piping Size	Dimension mm										O-Ring (OR NBR-90) P(G) * *-N)	Socket Head Cap Screw (4 Pcs.)	Max. Operating Pressure MPa	Approx. Mass kg <sup>*1</sup>	Tightening Torque <sup>*2</sup> Nm	
		C	D	E	F	H	J	K	N	Q	T					Recommendation	Tolerance
F5-04-C	1/2	40	54	17.5	38.1	8.8	39	13	17	21.7	13	P22	M 8 ×30	28	0.25	35	±10 %
F5-06-C	3/4	48	65	22.2	47.6	11	41	16	19	27.2	19	G30	M10×35	28	0.35	68.5	
F5-08-C	1	55	70	26.2	52.4	11	42	16	19	34	26	G35	M10×35	28	0.45	68.5	
F5-10-C	1 1/4	64	80	30.2	58.7	11	44	16	19	42.7	32	G40	M10×35	28	0.63	68.5	
F5-12-C	1 1/2	72	94	35.7	69.9	13.5	50	18	22	48.6	38	G50	M12×40	21	1.3	118	
F5-16-C	2	85	102	42.9	77.8	13.5	50	18	22	60.5	51	G65	M12×40	17.5	1.3	118	
F5-20-C	2 1/2	102	114	50.8	88.9	13.5	50	20	25	76.3	63	G75	M12×45	14	1.4	118	

★1. Approx. mass is the value including socket head cap screw (4 pcs.).

★2. The values of tightening torque above apply to when these flanges are used for pressure line.

## 4 Bolt Solid Flanges (SAE) “F6” Series Pipe Flange Kits

The dimensions of the flange mounting surface are based upon SAE 4 Bolt Split Flange (High Pressure Series).

### Specifications

Max. Operating Pressure..... 42 MPa

However, Rc Threaded Connection Type..... 31 MPa

### Model Number Designation

F6	-04W	-A	-M	-10
Series Number	Flange Size	Type of Pipe Connection	Type of Mounting Bolt	Design Standards
F6	Refer to below table	A : Threaded Connection B : Socket Welding	M : Metric Thd.	10

Kit Number	Piping Size	Dimension mm										O-Ring (OR NBR-90 P(G) * *-N)	Socket Head Cap Screw (4 Pcs.)	Approx. Mass kg	Tightening Torque Nm																	
		C	D	E	F	H	J	K	L	N	Q				T	Recommendation	Tolerance															
F6-04W-A	3/8	48	56.5	18.2	40.5	8.8	28	12	3/8	-	-	15	P22	M 8 ×40	0.4	35	±10%															
F6-04W-B									-	9	17.8																					
F6-04 -A	1/2								-	-	-	30						15	1/2	-	-											
F6-04 -B									-	11	22.2																					
F6-06W-A	1/2								57.5	77.5	23.8	50.8						11	30	15	1/2	-	-	21	G30	M10×45	0.9	68.5				
F6-06W-B																					-	11	22.2									
F6-06 -A	3/4																				-	-	-	30					15	3/4	-	-
F6-06 -B																					-	12	27.7									
F6-08W-A	3/4	65	81	27.8	57.2	13.5	30	15					3/4	-	-	26					G35	M12×45	1.1	118								
F6-08W-B													-	12	27.7																	
F6-08 -A	1												-	-	-	30						15							1	-	-	
F6-08 -B													-	14	34.5																	
F6-10W-A	1								72	95	31.8	66.7	13.5	34	16	1		-	-	34		G40			M12×50	1.3	287					
F6-10W-B																-		14	34.5													
F6-10 -A	1 1/4															-		-	-	34					16			1 1/4	-	-		
F6-10 -B																-		16	43.2													
F6-12W-A	1 1/4	90	113	36.5	79.4	17.5	34	21								1 1/4	-	-	44	G50	M16×55		1.5	287								
F6-12W-B																-	16	43.2														
F6-12 -A	1 1/2															-	-	-	34		21				1 1/2			-	-			
F6-12 -B																-	18	49.1														

★1. Approx. mass is the value including socket head cap screw (4Pcs.).

★2. The values of tightening torque above apply to when these flanges are used for pressure line.

# CONTAMIKIT (Microscopic Inspection Device) "YC-100"

This device is a portable instrument for measuring the contamination level of hydraulic fluid compared to the standard contamination plate. (The contamination level is determined by the NAS1638 grade as reference.) It has high reliability with easy operation.

- You can use it anywhere.  
It is portable and can be switched to either AC or DC power supply.
- Anybody can use it by comparing the sample with the standard contamination plate.
- Measurement takes only about 10 minutes.
- The results can be photographed by an SLR camera.



CONTAMIKIT  
"YC-100"

## Options

The following options are separately available.

### (1) Filter Kit for Water-Glycol Hydraulic Fluid

For use in measuring the contamination of water-glycol hydraulic fluid. For this measurement use clean tap water instead of cleaning solvent. For other parts, use standard ones.

- Model No. : M-KYC-100-F-20
- Components : ① 50 Membrane Filter Elements (25 mm in dia., 3 μm thick)  
② 50 Slide Glass Sheets  
③ 50 One-Sided Adhesive Papers

### (2) Four-times Objective Lens

The four-times objective lens can give you an enlarged field of view under the microscope. It is suitable for measuring samples having a wide distribution of relatively large particles of contaminations.

- Model No. : KYC-100-L-20
- Components : A pair of four-times objective lenses

## Parts

The following parts are separately available.

Name of Parts	Model Numbers	Specifications
Camera Adaptor	KYC-100-C-20	
Manual Vacuum Pump	KYC-100-P-20	Vacuum Hose (0.4m)
Filtering Flask	KYC-100-R1-20	
Glass Base	KYC-100-R2-20	
Funnel	KYC-100-R3-21	
Clamp	KYC-100-R4-21	
Holder	KYC-100-R5-20	
Spare Lamp	KYC-100-D-20	5V · 0.47A (With Frost Gass)
Filter-Kit	KYC-100-F-20	50 Membrane Filter Elements 50 Slide Glasses Sheets 50 One-Sided Adhesive Papers
Cleaning Vial *	KYC-100-N-20	500ml×6 Bottles

★This is an inflammable substance, so not available for the transportation by plane or ship. For the oversea use of the product, obtain the cleaning solvent.

По вопросам продаж и поддержки обращайтесь:

Алматы (7273)495-231  
Ангарск (3955)60-70-56  
Архангельск (8182)63-90-72  
Астрахань (8512)99-46-04  
Барнаул (3852)73-04-60  
Белгород (4722)40-23-64  
Благовещенск (4162)22-76-07  
Брянск (4832)59-03-52  
Владивосток (423)249-28-31  
Владикавказ (8672)28-90-48  
Владимир (4922)49-43-18  
Волгоград (844)278-03-48  
Вологда (8172)26-41-59  
Воронеж (473)204-51-73  
Екатеринбург (343)384-55-89

Иваново (4932)77-34-06  
Ижевск (3412)26-03-58  
Иркутск (395)279-98-46  
Казань (843)206-01-48  
Калининград (4012)72-03-81  
Калуга (4842)92-23-67  
Кемерово (3842)65-04-62  
Киров (8332)68-02-04  
Коломна (4966)23-41-49  
Кострома (4942)77-07-48  
Краснодар (861)203-40-90  
Красноярск (391)204-63-61  
Курган (3522)50-90-47  
Курск (4712)77-13-04  
Липецк (4742)52-20-81

Магнитогорск (3519)55-03-13  
Москва (495)268-04-70  
Мурманск (8152)59-64-93  
Набережные Челны (8552)20-53-41  
Нижний Новгород (831)429-08-12  
Новокузнецк (3843)20-46-81  
Новосибирск (383)227-86-73  
Ноябрьск (3496)41-32-12  
Омск (3812)21-46-40  
Орел (4862)44-53-42  
Оренбург (3532)37-68-04  
Пенза (8412)22-31-16  
Пермь (342)205-81-47  
Петрозаводск (8142)55-98-37  
Псков (8112)59-10-37

Ростов-на-Дону (863)308-18-15  
Рязань (4912)46-61-64  
Самара (846)206-03-16  
Санкт-Петербург (812)309-46-40  
Саранск (8342)22-96-24  
Саратов (845)249-38-78  
Севастополь (8692)22-31-93  
Симферополь (3652)67-13-56  
Смоленск (4812)29-41-54  
Сочи (862)225-72-31  
Ставрополь (8652)20-65-13  
Сургут (3462)77-98-35  
Сыктывкар (8212)25-95-17  
Тамбов (4752)50-40-97  
Тверь (4822)63-31-35

Тольятти (8482)63-91-07  
Томск (3822)98-41-53  
Тула (4872)33-79-87  
Тюмень (3452)66-21-18  
Улан-Удэ (3012)59-97-51  
Ульяновск (8422)24-23-59  
Уфа (347)229-48-12  
Хабаровск (4212)92-98-04  
Чебоксары (8352)28-53-07  
Челябинск (351)202-03-61  
Череповец (8202)49-02-64  
Чита (3022)38-34-83  
Якутск (4112)23-90-97  
Ярославль (4852)69-52-93

Россия +7(495)268-04-70

Казахстан +7(7172)727-132

Киргизия +996(312)96-26-47

yne@nt-rt.ru || <https://yuken.nt-rt.ru>