

Алматы (7273)495-231
 Ангарск (3955)60-70-56
 Архангельск (8182)63-90-72
 Астрахань (8512)99-46-04
 Барнаул (3852)73-04-60
 Белгород (4722)40-23-64
 Благовещенск (4162)22-76-07
 Брянск (4832)59-03-52
 Владивосток (423)249-28-31
 Владикавказ (8672)28-90-48
 Владимир (4922)49-43-18
 Волгоград (844)278-03-48
 Вологда (8172)26-41-59
 Воронеж (473)204-51-73
 Екатеринбург (343)384-55-89

Иваново (4932)77-34-06
 Ижевск (3412)26-03-58
 Иркутск (395)279-98-46
 Казань (843)206-01-48
 Калининград (4012)72-03-81
 Калуга (4842)92-23-67
 Кемерово (3842)65-04-62
 Киров (8332)68-02-04
 Коломна (4966)23-41-49
 Кострома (4942)77-07-48
 Краснодар (861)203-40-90
 Красноярск (391)204-63-61
 Курган (3522)50-90-47
 Курск (4712)77-13-04
 Липецк (4742)52-20-81

Магнитогорск (3519)55-03-13
 Москва (495)268-04-70
 Мурманск (8152)59-64-93
 Набережные Челны (8552)20-53-41
 Нижний Новгород (831)429-08-12
 Новокузнецк (3843)20-46-81
 Новосибирск (383)227-86-73
 Ноябрьск (3496)41-32-12
 Омск (3812)21-46-40
 Орел (4862)44-53-42
 Оренбург (3532)37-68-04
 Пенза (8412)22-31-16
 Пермь (342)205-81-47
 Петрозаводск (8142)55-98-37
 Псков (8112)59-10-37

Ростов на Дону (863)308-18-15
 Рязань (4912)46-61-64
 Самара (846)206-61-16
 Санкт-Петербург (812)309-46-40
 Саранск (8342)22-96-24
 Саратов (845)249-38-78
 Севастополь (8692)22-31-93
 Симферополь (3652)67-13-56
 Смоленск (4812)29-41-54
 Сочи (862)225-72-31
 Ставрополь (8652)20-65-13
 Сургут (3462)77-98-35
 Сыктывкар (8212)25-95-17
 Тамбов (4752)50-40-97
 Тверь (4822)63-31-35

Тольятти (8482)63-91-07
 Томск (3822)98-41-53
 Тула (4872)33-79-87
 Тюмень (3452)66-21-18
 Улан-Удэ (3012)59-97-51
 Ульяновск (8422)24-23-59
 Уфа (347)229-48-12
 Хабаровск (4212)92-98-04
 Чебоксары (8352)28-53-07
 Челябинск (351)202-03-61
 Череповец (8202)49-02-64
 Чита (3022)38-34-83
 Якутск (4112)23-90-97
 Ярославль (4852)69-52-93

Россия +7(495)268-04-70

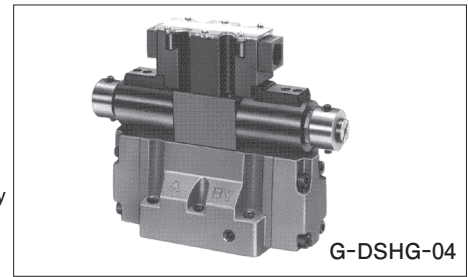
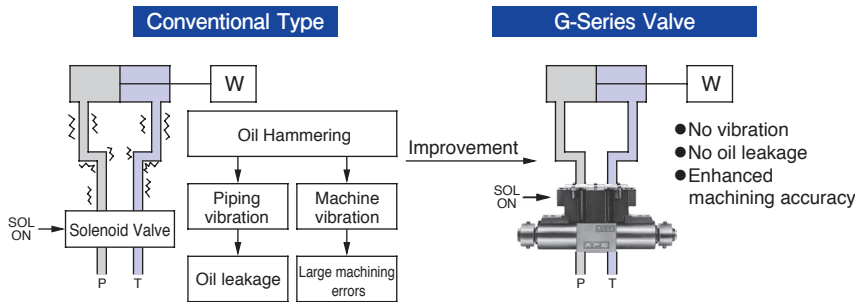
Казахстан +7(7172)727-132

Киргизия +996(312)96-26-47

yne@nt-rt.ru || https://yuken.nt-rt.ru

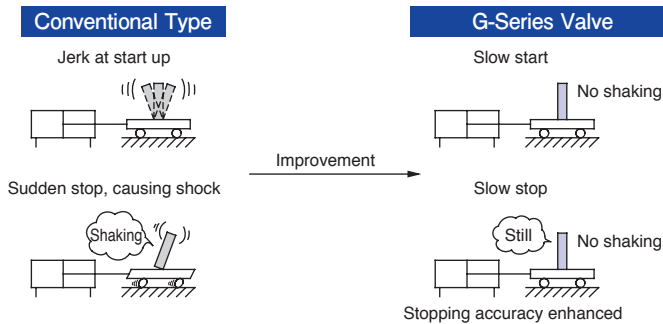
"G" Series Shockless Type Solenoid Operated / Solenoid

1 Reduces oil hammering during spool changeover.



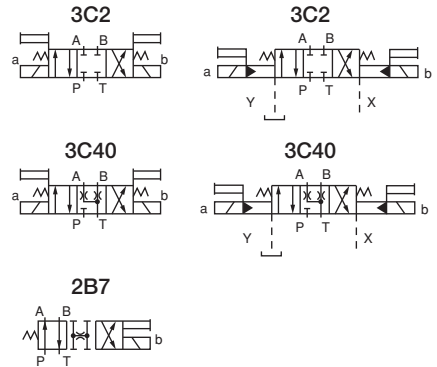
Graphic Symbols

2 Reduces shock caused by acceleration and deceleration



● G-DSG-01/03

● G-DSHG-04/06



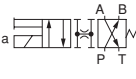
Specifications

Model Numbers	Max. Flow L/min	Max. Operating Pressure MPa	Max. T-Line Back Pressure MPa	Pilot Pressure MPa		Pilot Flow L/min		Shifting Time Range s		Mass kg	
				Max.	Min.	at Normal	at Transition	for ON	for OFF	3C*	2B7
G-DSG-01-***-51	10 20 30 40	25	16	—	—	—	—	0.1 - 1	—	3	2.1
G-DSG-03-***-51	40 60 80	25	16	—	—	—	—	0.3 - 1	—	7.5	5.3
G-DSHG-04-3C***-50	160	25	16	16	1.5	1	4	0.06 - 1.5	0.1 - 2	12	—
G-DSHG-06-3C***-50	250					1	6	0.1 - 1	0.2 - 2	15	—

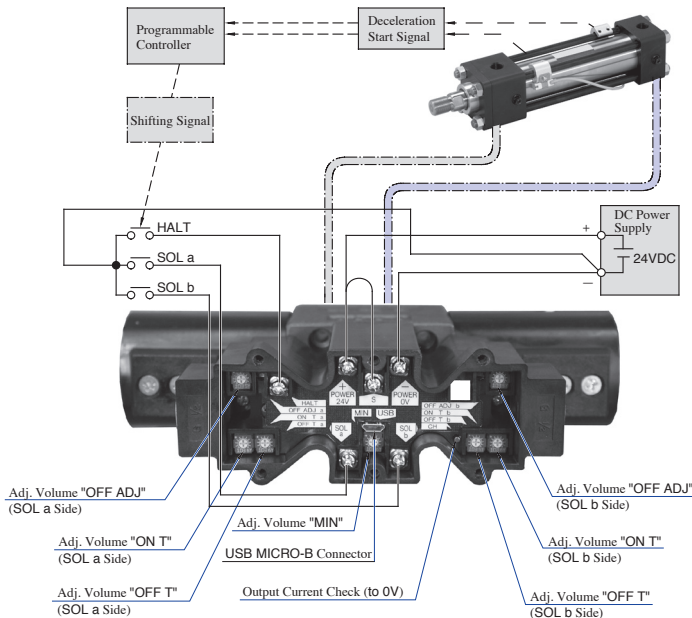
● Electrical Specifications

Model Numbers	Electric Power Supply		Shifting Signal, low speed operation halt signal (HALT)		
	Voltage	Input Power	Voltage	Current	Input Interface
G-DSG-01-***-51	24 V DC (21 - 28 V DC Included Ripple) Use a stable power supply	36 W	5 - 48 V DC (Can be used in common with electric power supply) Use a stable power supply	Constant at 10 mA (A constant current circuit is used)	Sink Type, Source Type
G-DSG-03-***-51					
G-DSHG-04-3C***-50					
G-DSHG-06-3C***-50					

Model Number Designation

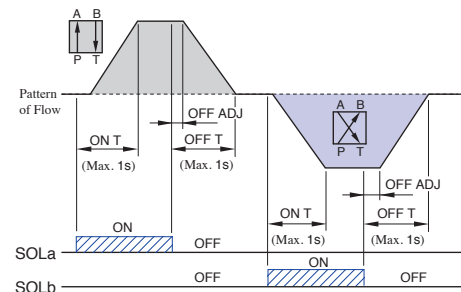
G-DSG	-01	-10	-2B7	—	—	-S	-51	-L
G-DSHG	-04	—	-3C2	-E	-R2	-S	-50	—
Series Number	Valve Size	Metered Flow Capacity	Spool Type (Refer to Graphic symbols)	Pilot Connection	Input only for options below	Input Interface	Design Number	Models with reverse mtg. of solenoid
G-DSG : “G” Series Shockless Type Solenoid Operated Directional Valves (Sub-plate Mounting Type)	01	None : 40L/min 10 : 10L/min 20 : 20L/min	3C2 3C40	—	—	None : Sink Type (Standard) S : Source Type	51	L : Input only for reverse mtg. of solenoid. (Only for 2B7) 
		None : 30L/min 10 : 10L/min 20 : 20L/min	2B7					
	03	None : 80L/min 40 : 40L/min 60 : 60L/min	3C2 3C40					
		None : 60L/min 40 : 40L/min	2B7					
G-DSHG : “G” Series Shockless Type Solenoid Controlled Pilot Operated Directional Valves (Sub-plate Mounting Type)	04	—	3C2 3C40	None : Internal Pilot	R2 : With Stroke Adjustment, Both Ends	—	50	—
	06			E : External Pilot	RA : With Stroke Adjustment, Port "A" End RB : With Stroke Adjustment, Port "B" End		50	

System Diagram (Example of sink type wiring)

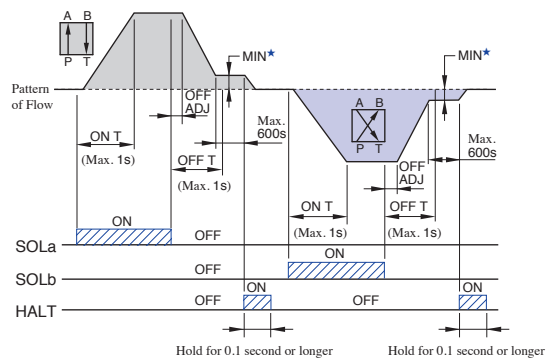


Relationships between SOL signals and flow patterns

Without HALT functions



With HALT functions



- ★ The minimum adjustment volume is common for SOL a and b, and it is not possible to set a different volume for each SOL a and b individually.
If the HALT functions are not used, set the minimum adjustment volume to zero.

“G” Series Shockless Type

■ Interchangeability between Current and New Product

“G” Series Shockless Type Solenoid Operated Directional Valves have changed models from 50 design to 51 design by installation of new amplifier.

Current Model Numbers	New Model Numbers
G-DSG-01- * - * * * - * -50	G-DSG-01- * - * * * - * -51
G-DSG-03- * - * * * - * -50	G-DSG-03- * - * * * - * -51

● Major Changes

Use newly developed Digital Control Amplifier.

● Interchangeability

Adjusting trimmer is inherited from the current model. Same as on the current model, trimmer adjustment allows to modify the time of spool switching in accordance with the machine.

● New Functions

USB MICRO-B connector has been added and adjustment on PC using specialized software made available.

Making minute adjustments and readjusting has become easier compared to current model. Copying of set adjustment value made available. There is a maintenance function that allows to check working conditions of the valve such as solenoid current value and operating time on PC.

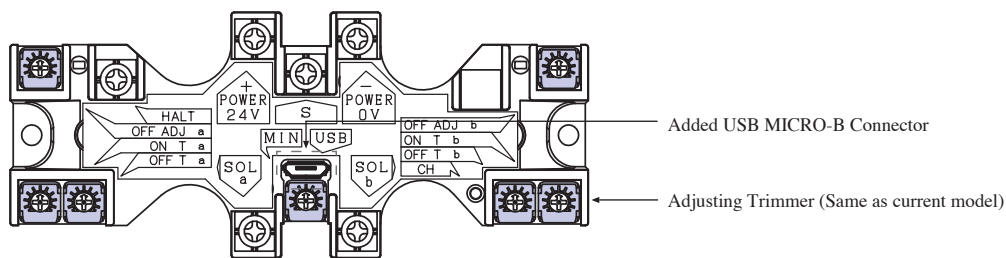
● Interchangeability in Installation

Yes

● Comparison between Current and New

No changes in specifications, characteristics, dimensions, installations, connecting terminal and trimmer arrangement.

USB MICRO-B connector has been added to the on-board amplifier.



По вопросам продаж и поддержки обращайтесь:

Алматы (7273)495-231
 Ангарск (3955)60-70-56
 Архангельск (8182)63-90-72
 Астрахань (8512)99-46-04
 Барнаул (3852)73-04-60
 Белгород (4722)40-23-64
 Благовещенск (4162)22-76-07
 Брянск (4832)59-03-52
 Владивосток (423)249-28-31
 Владикавказ (8672)28-90-48
 Владимир (4922)49-43-18
 Волгоград (844)278-03-48
 Вологда (8172)26-41-59
 Воронеж (473)204-51-73
 Екатеринбург (343)384-55-89
 Иваново (4932)77-34-06
 Ижевск (3412)26-03-58
 Иркутск (395)279-98-46
 Казань (843)206-01-48

Калининград (4012)72-03-81
 Калуга (4842)92-23-67
 Кемерово (3842)65-04-62
 Киров (8332)68-02-04
 Коломна (4966)23-41-49
 Кострома (4942)77-07-48
 Краснодар (861)203-40-90
 Красноярск (391)204-63-61
 Курган (3522)50-90-47
 Курск (4712)77-13-04
 Липецк (4742)52-20-81
 Магнитогорск (3519)55-03-13
 Москва (495)268-04-70
 Мурманск (8152)59-64-93
 Набережные Челны (8552)20-53-41
 Нижний Новгород (831)429-08-12
 Новокузнецк (3843)20-46-81
 Новосибирск (383)227-86-73
 Ноябрьск (3496)41-32-12

Омск (3812)21-46-40
 Орел (4862)44-53-42
 Оренбург (3532)37-68-04
 Пенза (8412)22-31-16
 Пермь (342)205-81-47
 Петрозаводск (8142)55-98-37
 Псков (8112)59-10-37
 Ростов-на-Дону (863)308-18-15
 Рязань (4912)46-61-64
 Самара (846)206-03-16
 Санкт-Петербург (812)309-46-40
 Саранск (8342)22-96-24
 Саратов (845)249-38-78
 Севастополь (8692)22-31-93
 Симферополь (3652)67-13-56
 Смоленск (4812)29-41-54
 Сочи (862)225-72-31
 Ставрополь (8652)20-65-13
 Сургут (3462)77-98-35

Сыктывкар (8212)25-95-17
 Тамбов (4752)50-40-97
 Тверь (4822)63-31-35
 Тольятти (8482)63-91-07
 Томск (3822)98-41-53
 Тула (4872)33-79-87
 Тюмень (3452)66-21-18
 Улан-Удэ (3012)59-97-51
 Ульяновск (8422)24-23-59
 Уфа (347)229-48-12
 Хабаровск (4212)92-98-04
 Чебоксары (8352)28-53-07
 Челябинск (351)202-03-61
 Череповец (8202)49-02-64
 Чита (3022)38-34-83
 Якутск (4112)23-90-97
 Ярославль (4852)69-52-93

Россия +7(495)268-04-70

Казахстан +7(7172)727-132

Киргизия +996(312)96-26-47