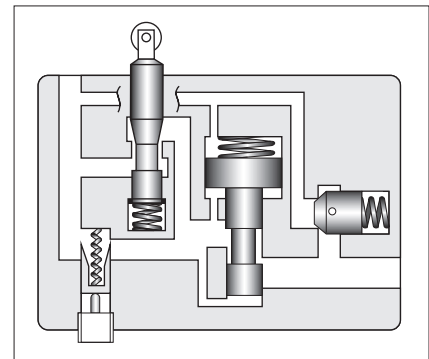
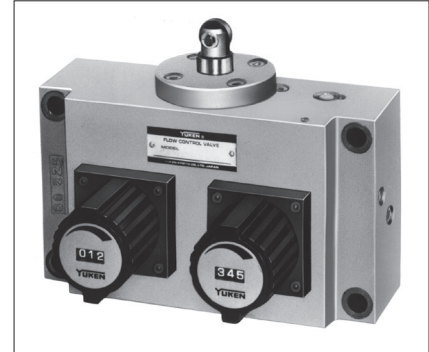


# Feed Control Valves

This valve is a compact combination of a flow control valve with check valve and a deceleration valve, and is mainly used for machine tools. The switching from rapid feed to cutting feed is done by a cam, and the cutting feed speed can be adjusted as desired. Since this is a pressure/temperature compensated type, the set flow rate is constant regardless of changes in pressure (load) and temperature (hydraulic oil viscosity). Therefore, precise speed control is possible. The valve size "04" is digitally graduated for easy flow reproduction. The return can be quickened regardless of the position of the cam.



## Specifications

Model Numbers	Max. Flow L/min <sup>★1</sup>	Metered Flow Range L/min		Max. Reversed Free Flow L/min	Max. Operating Pressure MPa	Mass kg
		Feed	Fine Feed			
UCF1G-01-4-A-* -11	16 (12)	0.03 - 4 (0.05 - 4) <sup>★2</sup>	—	20	14	1.6
UCF1G-01-4-B-* -11	12 (8)					
UCF1G-01-4-C-* -11	8 (4)					
UCF1G-01-8-A-* -11	20 (12)	0.03 - 8 (0.05 - 8) <sup>★2</sup>	—	40	14	2.6
UCF1G-01-8-B-* -11	16 (8)					
UCF1G-01-8-C-* -11	12 (4)					
UCF1G-03-4-* -10	40 (40)	0.05 - 4	—	40	14	2.7
UCF1G-03-8-* -10	40 (40)	0.05 - 8	—			
UCF2G-03-4-* -10	40 (40)	0.1 - 4	0.05 - 4	40	14	2.7
UCF2G-03-8-* -10		0.1 - 8	0.05 - 4			
UCF1G-04-30-30	80 (40)	0.1 - 22	—	80	14	6.5
UCF2G-04-30-30		0.1 - 22	0.1 - 17			9.2

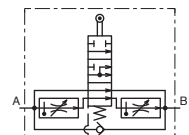
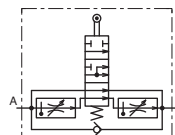
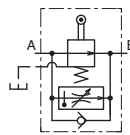
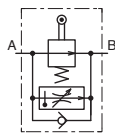
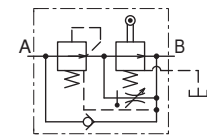
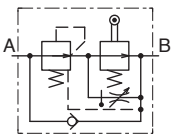
★1. The maximum flow rates are values with the deceleration valve and the flow control valve fully open. The values in parentheses are maximum flow rates with the deceleration valve fully open and the flow control valve fully closed.

★2. The values in parentheses are for pressures above 7 MPa.

## Model Number Designation

UCF1	G	-01	-4	-A	-E	-11
Series Number	Type of Mounting	Valve Size	Nominal Metered Flow L/min	Deceleration Valve Max. Flow L/min	Drain Connection	Design Number
UCF1 : Single Feed Control	G : Gasket Mounting	01	4·8	A : 12, B : 8, C : 4	None : Internal Drain, E : External Drain	11
		03	4·8	—		10
		04	30	—	None : External Drain	30
UCF2 : Double Feed Control	Gasket Mounting	03	4·8	—	None : Internal Drain, E : External Drain	10
		04	30	—	None : External Drain	30

## Graphic Symbols



UCF1G-01-4-A-11

UCF1G-03-8-10

UCF1G-03-8-10

UCF1G-03-8-10  
UCF1G-04-30-30

UCF2G-03-8-10

UCF2G-03-8-10  
UCF2G-04-30-30

Алматы (7273)495-231  
Ангарск (3955)60-70-56  
Архангельск (8182)63-90-72  
Астрахань (8512)99-46-04  
Барнаул (3852)73-04-60  
Белгород (4722)40-23-64  
Благовещенск (4162)22-76-07  
Брянск (4832)59-03-52  
Владивосток (423)249-28-31  
Владикавказ (8672)28-90-48  
Владимир (4922)49-43-18  
Волгоград (844)278-03-48  
Вологда (8172)26-41-59  
Воронеж (473)204-51-73  
Екатеринбург (343)384-55-89

Иваново (4932)77-34-06  
Ижевск (3412)26-03-58  
Иркутск (395)279-98-46  
Казань (843)206-01-48  
Калининград (4012)72-03-81  
Калуга (4842)92-23-67  
Кемерово (3842)65-04-62  
Киров (8332)68-02-04  
Коломна (4966)23-41-49  
Кострома (4942)77-07-48  
Краснодар (861)203-40-90  
Красноярск (391)204-63-61  
Курган (3522)50-90-47  
Курск (4712)77-13-04  
Липецк (4742)52-20-81

Магнитогорск (3519)55-03-13  
Москва (495)268-04-70  
Мурманск (8152)59-64-93  
Набережные Челны (8552)20-53-41  
Нижний Новгород (831)429-08-12  
Новокузнецк (3843)20-46-81  
Новосибирск (383)227-86-73  
Ноябрьск (3496)41-32-12  
Омск (3812)21-46-40  
Орел (4862)44-53-42  
Оренбург (3532)37-68-04  
Пенза (8412)22-31-16  
Пермь (342)205-81-47  
Петрозаводск (8142)55-98-37  
Псков (8112)59-10-37

Ростов-на-Дону (863)308-18-15  
Рязань (4912)46-61-64  
Самара (846)206-03-16  
Санкт-Петербург (812)309-46-40  
Саранск (8342)22-96-24  
Саратов (845)249-38-78  
Севастополь (8692)22-31-93  
Симферополь (3652)67-13-56  
Смоленск (4812)29-41-54  
Сочи (862)225-72-31  
Ставрополь (8652)20-65-13  
Сургут (3462)77-98-35  
Сыктывкар (8212)25-95-17  
Тамбов (4752)50-40-97  
Тверь (4822)63-31-35

Тольятти (8482)63-91-07  
Томск (3822)98-41-53  
Тула (4872)33-79-87  
Тюмень (3452)66-21-18  
Улан-Удэ (3012)59-97-51  
Ульяновск (8422)24-23-59  
Уфа (347)229-48-12  
Хабаровск (4212)92-98-04  
Чебоксары (8352)28-53-07  
Челябинск (351)202-03-61  
Череповец (8202)49-02-64  
Чита (3022)38-34-83  
Якутск (4112)23-90-97  
Ярославль (4852)69-52-93