

Standard Hydraulic Power Unit YA Pack

Yuken standard hydraulic power unit YA Pack is developed with meeting the demand of times like saving resources, saving energy and low noise, etc.

It is achieved easy usability and wide assortment of models are available, so can select models with your requests.

- **Low Noise**

These units equipped with low noise A or AR series variable displacement piston pumps, also concerned for many places like the tank structure or piping construction, therefore the units are achieved low noise level and good sound quality.

- **Energy-Saving & Low Heat Generation**

These units equipped with high efficiency pressure compensation type of variable displacement piston pumps can save power consumption due to reducing power loss.

- **Wide assortment of models**

- A total of 35 models are available according to the combination of the built-in pump, the reservoir capacity, and the motor output, so that the most suitable model can be selected.
- 20 different options (incorporating a base plate, etc.) are available.

- **All Models Furnished with Output Flow Adj. Screw**

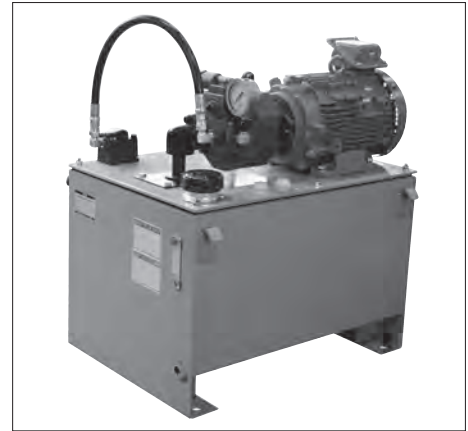
All models are furnished with output flow adjustment screw.

- **Short Delivery Time**

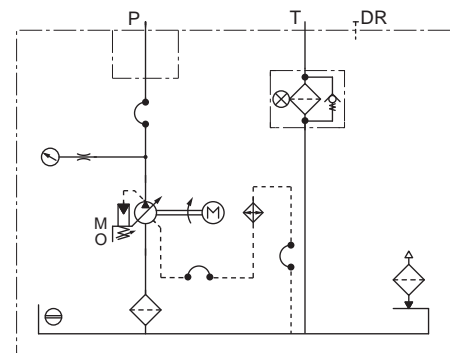
The standardization of hydraulic units make those delivery time short.

- **Facilitating the configuration of the control circuit**

With options that embedded modular valves, a wide variety of control circuits can be easily configured.



Hydraulic Circuit



По вопросам продаж и поддержки обращайтесь:

Алматы (7273)495-231
 Ангарск (3955)60-70-56
 Архангельск (8182)63-90-72
 Астрахань (8512)99-46-04
 Барнаул (3852)73-04-60
 Белгород (4722)40-23-60
 Благовещенск (4162)22-76-07
 Брянск (4832)59-03-52
 Владивосток (423)249-28-31
 Владикавказ (8672)28-90-48
 Владимир (4922)49-43-18
 Волгоград (844)278-03-48
 Вологда (8172)26-41-59
 Воронеж (473)204-51-73
 Екатеринбург (343)384-55-89

Иваново (4932)77-34-06
 Ижевск (3412)26-03-58
 Иркутск (395)279-98-46
 Казань (843)206-01-48
 Калининград (4012)72-03-81
 Калуга (4842)92-23-67
 Кемерово (3842)65-04-62
 Киров (8332)68-02-04
 Коломна (4966)23-41-49
 Кострома (4942)77-07-48
 Краснодар (861)203-40-90
 Красноярск (391)204-63-61
 Курган (3522)50-90-47
 Курск (4712)77-13-04
 Липецк (4742)52-20-81

Магнитогорск (3519)55-03-13
 Москва (495)268-04-70
 Мурманск (8152)59-64-93
 Набережные Челны (8552)20-53-41
 Нижний Новгород (831)429-08-12
 Новокузнецк (3843)20-46-81
 Новосибирск (383)227-86-73
 Ноябрьск (3496)41-32-12
 Омск (3812)21-46-40
 Орел (4862)44-53-42
 Оренбург (3532)37-68-04
 Пенза (8412)22-31-16
 Пермь (342)205-81-47
 Петрозаводск (8142)55-98-37
 Псков (8112)59-10-37

Ростов-на-Дону (863)308-18-15
 Рязань (4912)46-61-64
 Самара (846)206-03-16
 Санкт-Петербург (812)309-46-40
 Саратов (8342)22-96-24
 Саратов (845)249-38-78
 Севастополь (8692)22-31-93
 Симферополь (3652)67-13-56
 Смоленск (4812)29-41-54
 Сочи (862)225-72-31
 Ставрополь (8652)20-65-13
 Сургут (3462)77-98-35
 Сыктывкар (8212)25-95-17
 Тамбов (4752)50-40-97
 Тверь (4822)63-31-35

Тольятти (8482)63-91-07
 Томск (3822)98-41-53
 Тула (4872)33-79-87
 Тюмень (3452)66-21-18
 Улан-Удэ (3012)59-97-51
 Ульяновск (8422)24-23-59
 Уфа (347)229-48-12
 Хабаровск (4212)92-98-04
 Чебоксары (8352)28-53-07
 Челябинск (351)202-03-61
 Череповец (8202)49-02-64
 Чита (3022)38-34-83
 Якутск (4112)23-90-97
 Ярославль (4852)69-52-93

Россия +7(495)268-04-70

Казахстан +7(7172)727-132

Киргизия +996(312)96-26-47

yne@nt-rt.ru || <https://yuken.nt-rt.ru>

Specifications

Model Numbers	Geometric Displacement of Pump cm ³ /rev	Max. Operating Pres. (Note 1) MPa	Pres. Adj. Range MPa	Reservoir Capacity L	Electric Motor 50 Hz : 200 V AC 60 Hz : 200/220/230 V AC	Approx. Mass (Excluding Hydraulic oil) kg
YA10-B-2-0.75-52	10.0	7	1.2 - 7	20	0.75 kW×4P	48
YA10-B-3-0.75-52				30	0.75 kW×4P	53
YA10-B-3-1.5-52				30	1.5 kW×4P	56
YA10-B-4-0.75-52				40	0.75 kW×4P	58
YA10-B-4-1.5-52				40	1.5 kW×4P	63
YA10-B-6-1.5-51				60	1.5 kW×4P	73
YA10-B-6-2.2-51		60	2.2 kW×4P	81		
YA10-C-6-2.2-51		16	2.0 - 16	60	2.2 kW×4P	82
YA10-C-6-3.7-51				60	3.7 kW×4P	94
YA10-C-10-2.2-51				100	2.2 kW×4P	107
YA10-C-10-3.7-51				100	3.7 kW×4P	116
YA16-B-1-0.75-52		15.8	7	1.2 - 7	10	0.75 kW×4P
YA16-B-1-1.5-50	1.5 kW×4P					46
YA16-B-1-2.2-50	2.2 kW×4P					53
YA16-B-2-0.75-52	7		1.2 - 7	18	0.75 kW×4P	44
YA16-B-2-1.5-50					1.5 kW×4P	48
YA16-B-2-2.2-50					2.2 kW×4P	55
YA16-B-4-1.5-52	7		1.2 - 7	40	1.5 kW×4P	64
YA16-B-6-1.5-50	7		1.2 - 7	60	1.5 kW×4P	74
YA16-B-6-2.2-50					2.2 kW×4P	82
YA16-B-6-3.7-50					3.7 kW×4P	94
YA16-C-6-3.7-50	16		2.0 - 16	60	3.7 kW×4P	99
YA16-B-10-2.2-50	7		1.2 - 7	100	2.2 kW×4P	107
YA16-C-10-3.7-50	16		2.0 - 16	100	3.7 kW×4P	121
YA16-C-10-5.5-50					5.5 kW×4P	145
YA16-C-10-7.5-50					7.5 kW×4P	157
YA22-B-6-2.2-50					7	1.2 - 7
YA22-B-6-3.7-50	3.7 kW×4P	94				
YA22-B-10-2.2-50	7	1.2 - 7	100	2.2 kW×4P	112	
YA22-B-10-3.7-50				3.7 kW×4P	146	
YA22-C-10-5.5-50	16	2.0 - 16	100	5.5 kW×4P	145	
YA22-C-10-7.5-50				7.5 kW×4P	157	
YA37-B-10-3.7-50	36.9	7	1.2 - 7	100	3.7 kW×4P	141
YA37-B-16-5.5-50				160	5.5 kW×4P	175
YA37-B-16-7.5-50					7.5 kW×4P	182

Note 1) Maximum operating pressure is the upper limit of the pressure adjustment range of the pump.

2) The thermal class of the electric motor is type F in all models.

3) YA37-B-16-5.5/7.5 with a pump of two-pressure two-flow control type (control: 05 or 06) is also available as a special option. For details, please contact us.

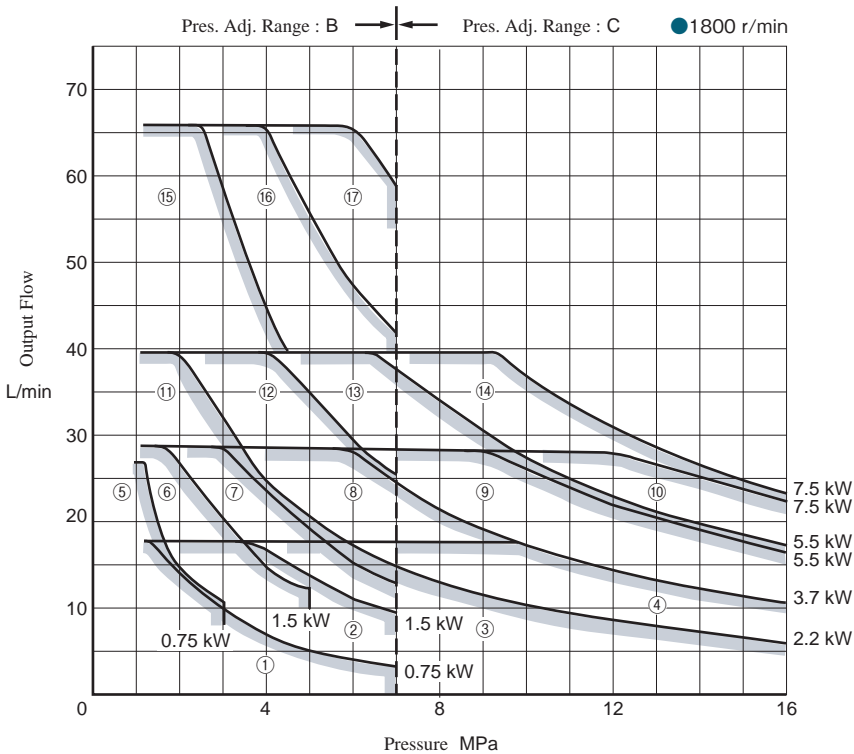
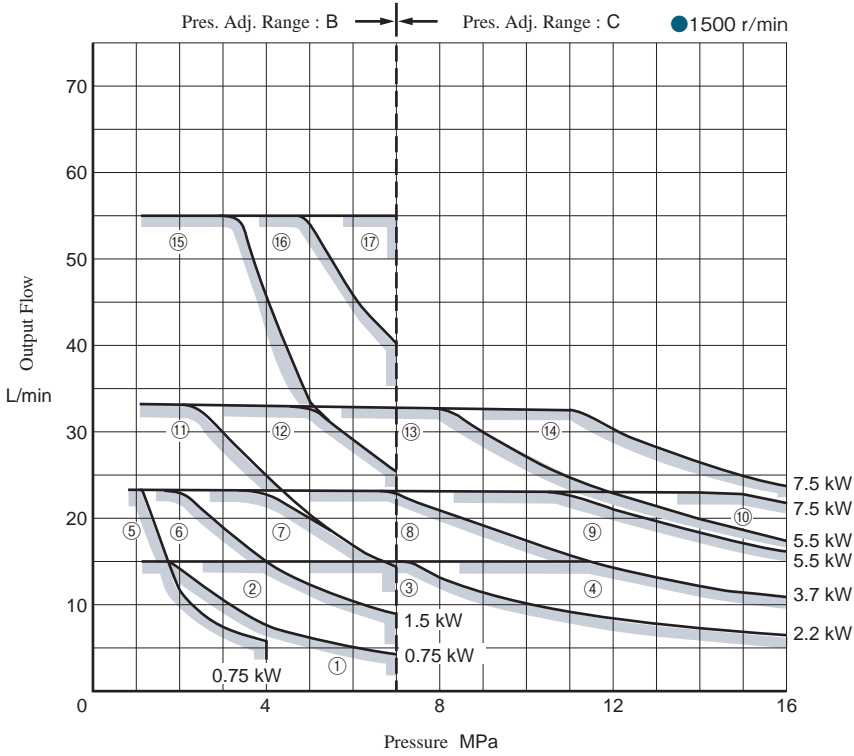
■ Model Number Designation

YA	16	-B	-6	-2.2	-50	
Series Number	Built-in Pump	Pres. Adj. Range ^{Note} MPa	Reservoir Capacity L	Electric Motor	Design Number	
YA : Low Noise Standard Hydraulic Power Unit YA Pack	10 : A10 (10.0 cm ³ /rev)	B : 1.2 - 7	2 : 20	0.75 : 0.75 kW×4P	52	
			3 : 30	0.75 : 0.75 kW×4P		
			4 : 40	1.5 : 1.5 kW×4P		
		B : 1.2 - 7	6 : 60	0.75 : 0.75 kW×4P		51
				1.5 : 1.5 kW×4P		
			2.2 : 2.2 kW×4P			
		C : 2.0 - 16	6 : 60	2.2 : 2.2 kW×4P		
				3.7 : 3.7 kW×4P		
		C : 2.0 - 16	10 : 100	2.2 : 2.2 kW×4P		
				3.7 : 3.7 kW×4P		
		16 : AR16 (15.8 cm ³ /rev)	B : 1.2 - 7	1 : 10	0.75 : 0.75 kW×4P	52
					1.5 : 1.5 kW×4P	50
	2.2 : 2.2 kW×4P					
	B : 1.2 - 7		2 : 18	0.75 : 0.75 kW×4P	52	
				1.5 : 1.5 kW×4P	50	
				2.2 : 2.2 kW×4P		
	B : 1.2 - 7		4 : 40	1.5 : 1.5 kW×4P	52	
				B : 1.2 - 7	6 : 60	1.5 : 1.5 kW×4P
	2.2 : 2.2 kW×4P					
	3.7 : 3.7 kW×4P					
	C : 2.0 - 16		6 : 60	3.7 : 3.7 kW×4P		
				B : 1.2 - 7	10 : 100	2.2 : 2.2 kW×4P
	C : 2.0 - 16	10 : 100	3.7 : 3.7 kW×4P			
			5.5 : 5.5 kW×4P			
	7.5 : 7.5 kW×4P					
	22 : AR22 (22.2 cm ³ /rev)	B : 1.2 - 7	6 : 60	2.2 : 2.2 kW×4P	50	
				3.7 : 3.7 kW×4P		
		B : 1.2 - 7	10 : 100	2.2 : 2.2 kW×4P		
3.7 : 3.7 kW×4P						
C : 2.0 - 16		10 : 100	5.5 : 5.5 kW×4P			
			7.5 : 7.5 kW×4P			
37 : A37 (36.9 cm ³ /rev)	B : 1.2 - 7	10 : 100	3.7 : 3.7 kW×4P			
			16 : 160	5.5 : 5.5 kW×4P		
				7.5 : 7.5 kW×4P		

Note) Pressure adjustment range values shown are those of the pump.

Selection Graph

Below  portion of the graph is the allowable operating range with regards to rated output of electric motor.



No.	Model Numbers
①	YA10-B-2-0.75 YA10-B-3-0.75 YA10-B-4-0.75
②	YA10-B-3-1.5 YA10-B-4-1.5 YA10-B-6-1.5
③	YA10-B-6-2.2 YA10-C-6-2.2 YA10-C-10-2.2
④	YA10-C-6-3.7 YA10-C-10-3.7
⑤	YA16-B-1-0.75 YA16-B-2-0.75
⑥	YA16-B-1-1.5 YA16-B-2-1.5 YA16-B-4-1.5 YA16-B-6-1.5
⑦	YA16-B-1-2.2 YA16-B-2-2.2 YA16-B-6-2.2 YA16-B-10-2.2
⑧	YA16-B-6-3.7 YA16-C-6-3.7 YA16-C-10-3.7
⑨	YA16-C-10-5.5
⑩	YA16-C-10-7.5
⑪	YA22-B-6-2.2 YA22-B-10-2.2
⑫	YA22-B-6-3.7 YA22-B-10-3.7
⑬	YA22-C-10-5.5
⑭	YA22-C-10-7.5
⑮	YA37-B-10-3.7
⑯	YA37-B-16-5.5
⑰	YA37-B-16-7.5

Oil Temperature in Reservoir

Oil temperature is expressed as (room temperature + temperature rise value).

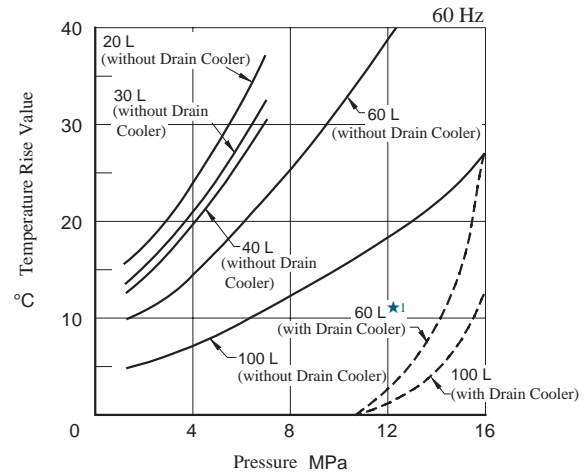
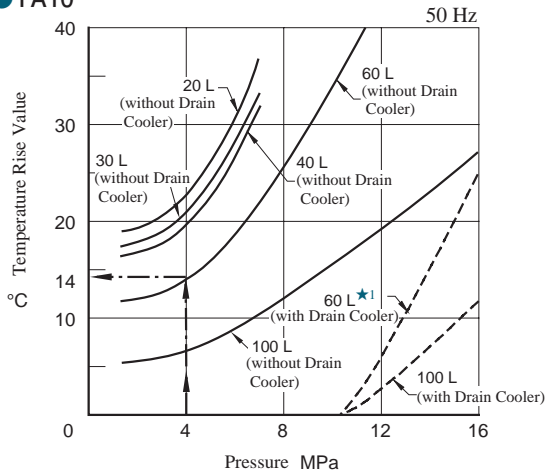
Temperature rise values (full cut-off continuous operation, windless conditions) for each model are shown below, please check that oil temperature is below 60°C.

Drain cooler is option except for some models.

(Ex.) When operating YA10-B-6-1.5 continuously (50Hz) at full cut-off pressure 4 MPa, temperature rise value is 14°C as shown by broken line in the graph.

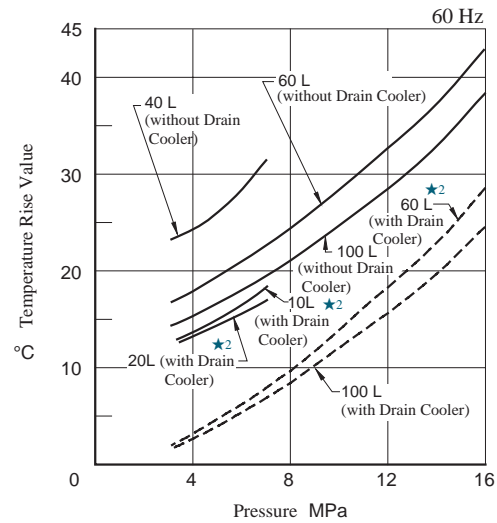
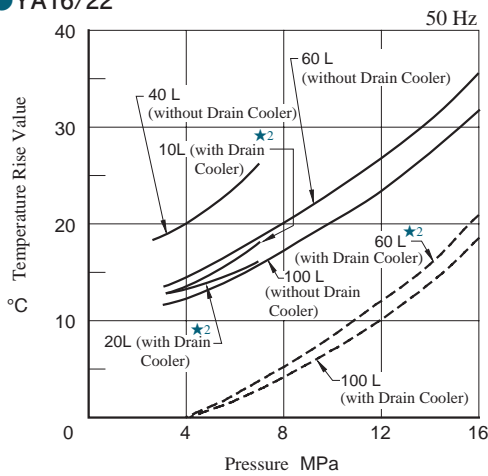
Assuming that room temperature is 35°C then tank temperature will be 49°C.

YA10



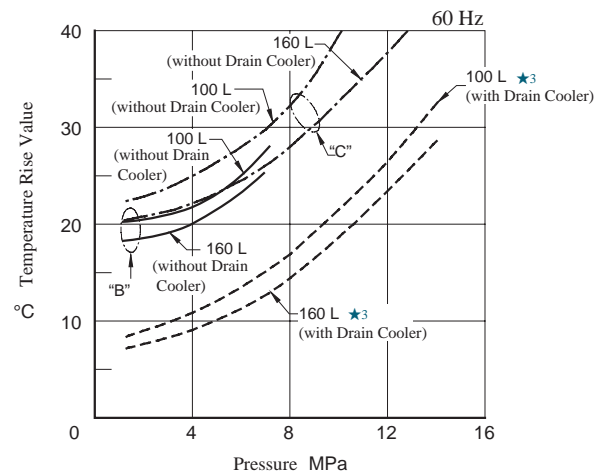
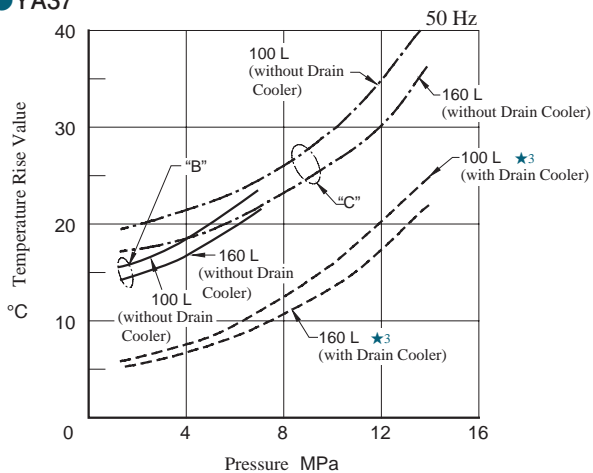
★ 1. Drain cooler is standard equipment only for YA10-C-6-2.2 and YA10-C-6-3.7.

YA16/22



★ 2. Drain cooler is standard equipment only for YA16-B-1-*, YA16-B-2-* and YA16-C-6-3.7.

YA37

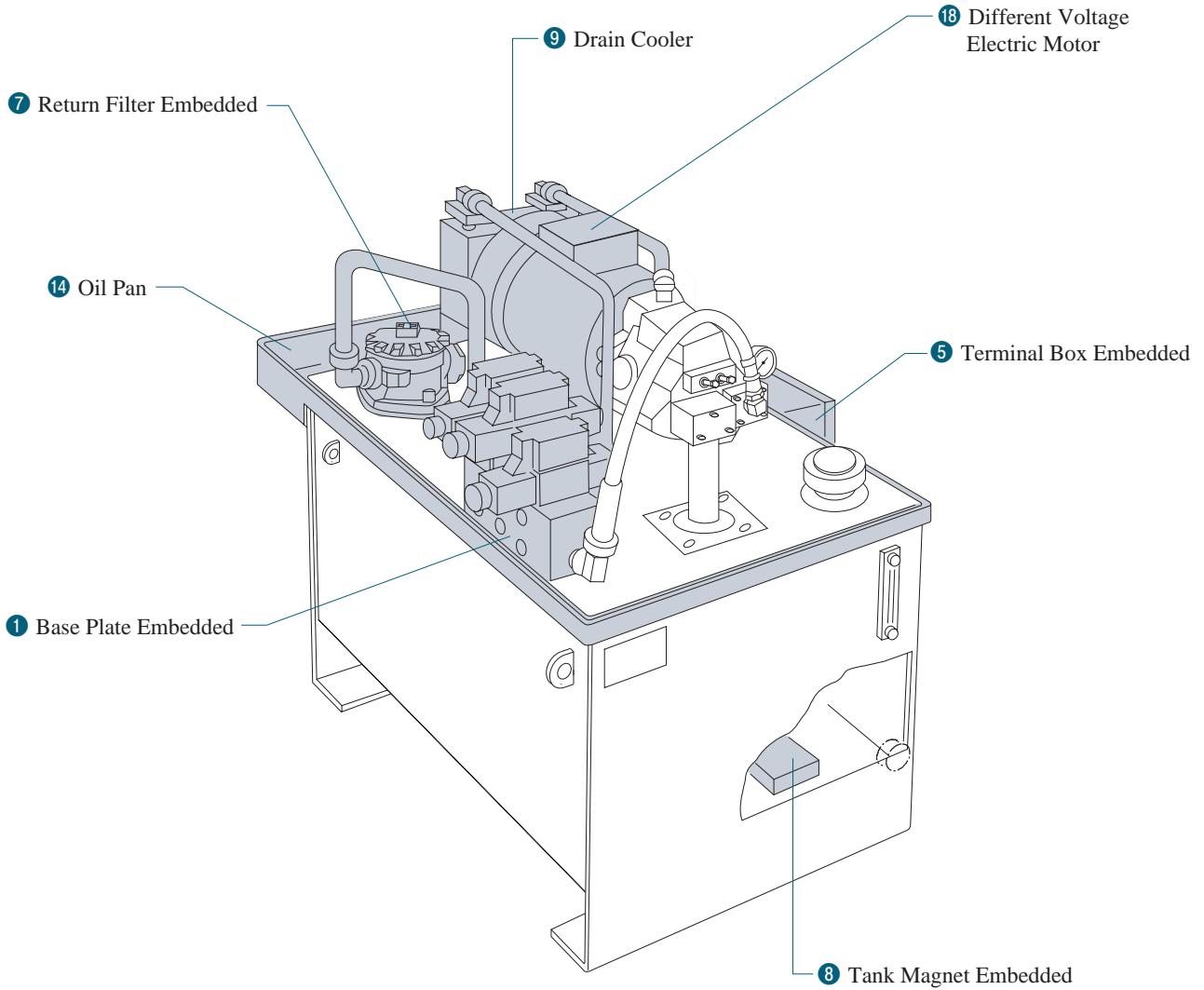


★ 3. Built-in drain cooler is option.

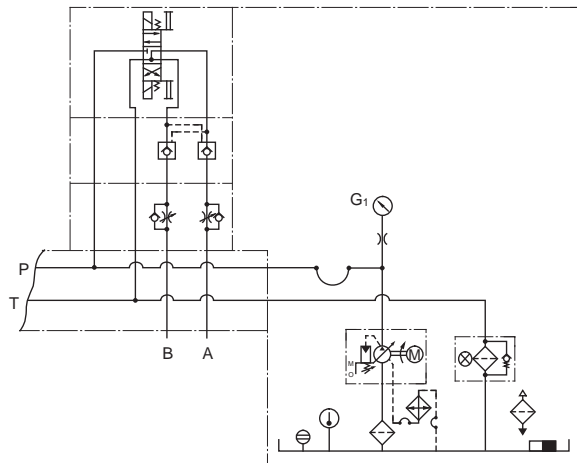
■ Options

● Example of Embedded Options

Various options are available except for standard models. Please select options with the applications. The drawing below is for an example. For details, please refer to the next page.



(Example of Hydraulic Circuit with Options Embedded)



■ Type and Summary of Options

① Base Plate Embedded : 01M* , 03M*

Control circuit can be constructed by just stacking up modular valves/ solenoid valve atop the base plate. If need control circuit, please contact us. However, the circuit construction is limited to modular valves and standard solenoid directional control valves. In this case, please indicate power supply for operation.

② Without Control Circuit : B

This option is available for models with 01M* or 03M* valve. Embed base plate and make piping construction in front and rear of the base plate. Please prepare the components construct the control circuit separately.

③ Without Port Block : E

Without port block and high pressure resin hose.

④ Pressure Gauge and Mounting Block Embedded : G2, G3

Use in case that detect the pressure except pump discharge pressure by using reducing valve.

G2 is able to detect one more line pressure, G3 is able to detect two more lines except pump discharge pressure.

⑤ Terminal Box Embedded : T1 - T3

The number of terminal is 10P for T1, 20P for T2, 34P for T3 3.7kW, 24P for T3 5.5kW, 20P for T3 7.5kW.

⑥ Electric Wiring Unit : V, VT

The electric wiring between terminal box and motor / control valve use the vinyl cable as standard.

In case of special specifications (VT), please indicate separately.

⑦ Return Filter Embedded : F

Return filter adopt the tank top type those surge pressure of tank line lower generate. The absolute filtration is 20 μm, equipped with visual indicator.

⑧ Tank Magnet Embedded : Mg

Installed inside the tank. Attracts and collects fine iron powder. Decreases component wear.

⑨ Drain Cooler Embedded : C (Radiator) : Ca (Fan Cooler)

⑩ Oil Level Gauge with Thermometer Embedded : Te

⑪ Water Cooler Embedded : Cw

⑫ Thermostat Embedded : TR

⑬ Liquid Level Switch Embedded : Le

⑭ Oil Pan Embedded : P

P : Standard Oil Pan

⑮ External Paint Color Changed : PT

In case if required special paint, please indicate separately by JPMA code or Munsell value.

⑯ Fire Service Act Applied : R

⑰ Water Leak Inspection : Rk

⑱ Different Voltage Electric Motor : (* V × * Hz)

200 V AC (50Hz) and 200/220/230 V AC (60Hz) are standard. In case if required other voltage, please indicate voltage and frequency.

⑲ Pressure Range Changed : (B→C)

Pressure Adjustment Range is available to change B to C. However, in case of YA37, maximum operating pressure is limited by 14 MPa.

⑳ P Port Check valve Embedded : D

Install angle type check valve for prevent reverse flow on the port block or base plate.

Attention

For the delivery time of options, please confirm us before ordering.

Options

Available options are indicated with ○ mark.

Option Code	01M*	03M*	B	E	G*	T*	V VT	F	Mg	C	Ca	Te	Cw	TR	Le	P	PT	R	Rk	*V *H	B ↓ C	D
Option Item	①		②	③	④	⑤	⑥	⑦	⑧	⑨		⑩	⑪	⑫	⑬	⑭	⑮	⑯	⑰	⑱	⑲	⑳
Model	Base Plate Embedded Size/Number of Plates		Without Control Circuit	Without Port Block	Pressure Gauge for Control Circuit Embedded	Terminal Box Embedded	Electric Wiring Unit	Return Filter Embedded	Tank Magnet Embedded	Radiator	Fan Cooler	Oil Level Gauge with Thermometer Embedded	Water Cooler Embedded	Thermostat Embedded	Liquid Level Switch Embedded	Oil Pan Embedded	External Paint Color Changed	Fire Service Act Applied	Water Leak Inspection	Different Voltage Electric Motor	Pressure Range Changed	P Port Check valve Embedded
YA16-B-1-*	○ 1-2	×	○	—	○	○ T1	○	×	○	Built-in	×	○	×	○	○	×	○	×	○	○	×	×
YA10-B-2-0.75	×	×	—	—	—	○ T1	○	×	○	○	×	○	×	○	○	○	○	×	○	○	×	×
YA16-B-2-*	○ 1-2	×	○	—	○	○ T1,T2	○	Note 5	○	Built-in	×	○	×	○	○	×	○	×	○	○	×	×
YA10-B-3-*	×	×	—	—	—	○ T1	○	Note 5	○	○	×	○	×	○	○	○	○	×	○	○	×	×
YA10-B-4-*	○ 1-3	×	○	○	○	○ T1,T2	○	○	○	○	×	○	×	○	○	○	○	○	○	○	○	×
YA16-B-4-1.5	○ 1-3	×	○	○	○	○ T1,T2	○	○	○	○	×	○	×	○	○	○	○	○	○	○	○	×
YA10-B-6-*	○ 1-5	×	○	○	○	○ T1,T2,T3	○	○	○	Note 1		○	Note 3	○	○	○	○	○	○	○	○	○
YA10-C-6-*	○ 1-5	×	○	○	○	○ T1,T2,T3	○	Built-in	○	Built-in	×	○	Note 3	○	○	○	○	○	○	○	○	—
YA16-B-6-*	○ 1-5	×	○	○	○	○ T1,T2,T3	○	○	○	Note 1		○	Note 3	○	○	○	○	○	○	○	○	○
YA16-C-6-*	○ 1-5	×	○	○	○	○ T1,T2,T3	○	Built-in	○	Built-in	×	○	Note 3	○	○	○	○	○	○	○	○	—
YA22-B-6-*	○ 1-5	×	○	○	○	○ T1,T2,T3	○	○	○	Note 1		○	Note 3	○	○	○	○	○	○	○	○	○
YA10-C-10-*	○ 1-5	○ 1-4	○	○	○	○ T1,T2,T3	○			Note 1		○	○	○	○	○	○	○	○	○	○	—
YA16-B-10-2.2	○ 1-5	○ 1-4	○	○	○	○ T1,T2,T3	○			Note 1		○	○	○	○	○	○	○	○	○	○	○
YA16-C-10-*	○ 1-5	○ 1-4	○	○	○	○ T1,T2,T3	○			Note 1		○	○	○	○	○	○	○	○	○	○	—
YA22-B-10-*	○ 1-5	○ 1-4	○	○	○	○ T1,T2,T3	○	Built-in		Note 1		○	○	○	○	○	○	○	○	○	○	○
YA22-C-10-*	○ 1-5	○ 1-4	○	○	○	○ T1,T2,T3	○			Note 1		○	○	○	○	○	○	○	○	○	○	—
YA37-B-10-3.7	×	○ 1-4	○	○	○	○ T1,T2,T3	○			Note 1		○	○	○	○	○	○	○	○	○	○	○
YA37-B-16-*	×	○ 1-4	○	○	○	○ T1,T2,T3	○			Note 1		○	○	○	○	○	○	○	○	○	○	○

Note 1) Choose either Radiator (C) or Fan Cooler (Ca) in ⑨ Drain Cooler embedded.

2) When Fan Cooler (Ca) in ⑨ Drain Cooler embedded or ⑪ Water Cooler embedded is chosen, ① The Number of Base Plates is limited.

Model	Selected Option	Number of Selectable Base Plates	
YA10/16/22- *-6	Fan Cooler (Ca) embedded.	Up to 2 (Size: 01)	
	Water Cooler (Cw) embedded.	Up to 4 (Size: 01)	
YA10/16/22/37- *-10	Fan Cooler (Ca) embedded.	Size: 01	Up to 3
		Size: 03	Up to 2
YA37-B-16		Up to 2 (Size: 03)	

When ⑯ Fire Service Act Applied (R) is chosen, a Fan Cooler (Ca) cannot be embedded.

3) Up to 4 base plates can be embedded in ①.

4) Only low limit level can be detected.

5) Oil-immersed type is available.

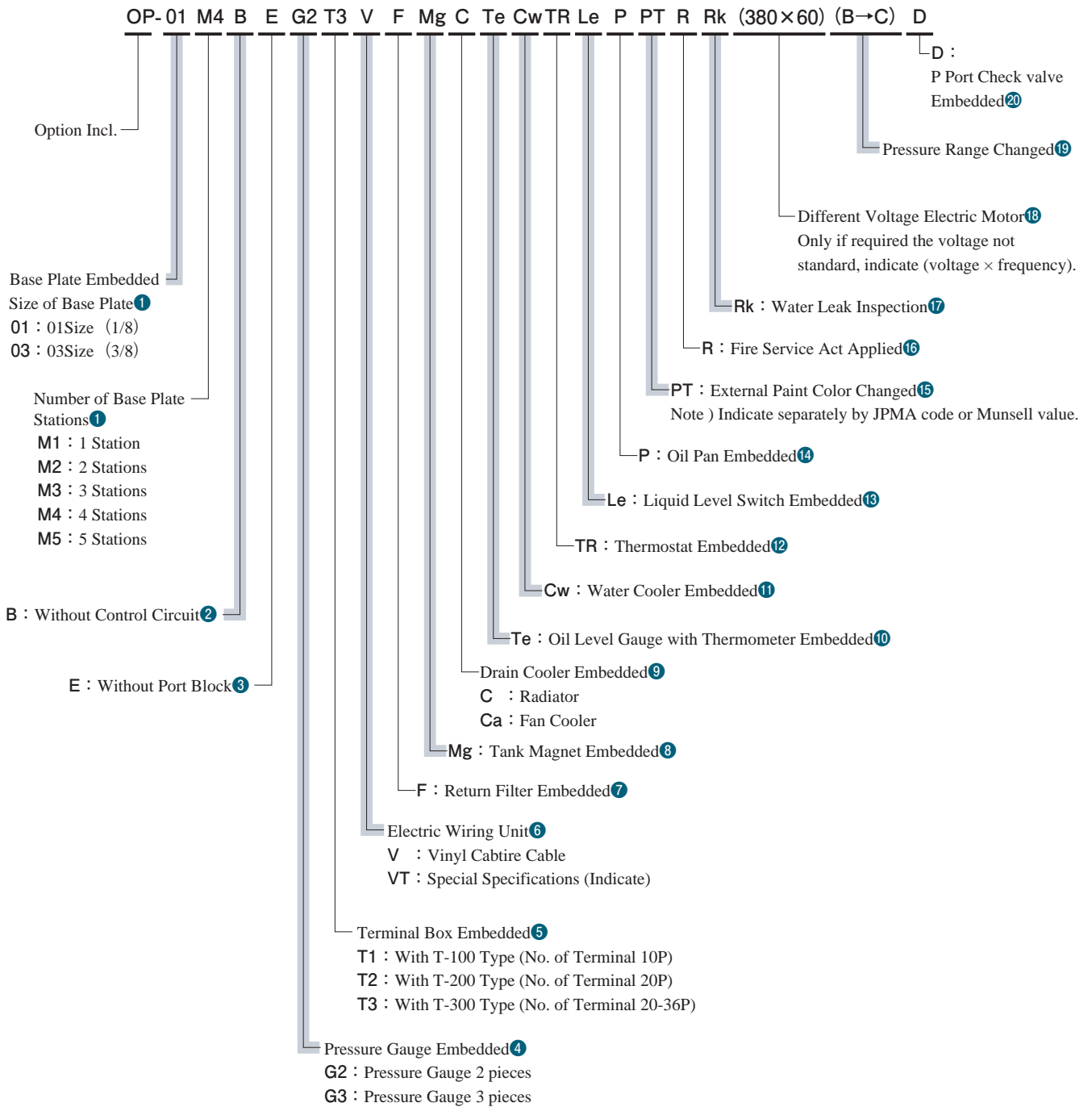
● Option Indication Method

When ordering YA Pack with options, please add 「OP」 at the end of standard YA Pack model number, use the example below for reference and indicate options. For summary of options, please refer to page K-19.

About the control circuit constructed by modular valves etc., please contact us separately. For the adaptation between models and options, please refer to the table on page K-20.

【Example of Option Indication】

YA16-B-6-3.7-50-OP



■ Instructions

● Suction/Return Air

Please install unit at the floor with good air flow to avoid heat stuff. Don't put any obstructions at air vent surface of the drain cooler.

● Transportation

Use hanging hooks on the oil tank at the time of transportation.

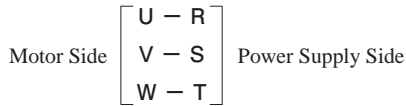
● Installation

This unit is stationary type, so please fix it using bolts on the level space with no vibration.

● Electrical Wiring

To protect electrical circuit from over current like short and protect motor from overload, we recommend to install no-fuse breaker with earth leakage breaker on the primary power supply.

For electrical wiring, please use crimp terminals of suitable size, and connect certainly to avoid electric leakage for main body and interphase electrical short. Please be sure to ground the earth terminal.



● Note for Starting Operation

Before initial operation, please supply ruled mass of hydraulic fluid required from oil tank port, and fill clean hydraulic fluid from filling port of pump till the oil full filled in pump housing. To avoid air-bound at starting operation, please adjust hydraulic circuit as that pump drain fluid return directly to oil tank, or operate directional valves for actuators no-load moving. Then start inching operation to confirm no particular, please do running operation.

● Air Vent

Because air entrainment in pump or pipe may cause to occur vibration, please make air vent completely.

● Setting of Pressure

〔Pressure Adjustment〕

At the time of shipping, the pressure set at minimum level, so please adjust the pressure under using conditions. Turn the pressure adjustment screw clockwise, the pressure increase. For adjustment volumes at one rotation of adjustment screw, please refer to the table below. After adjustments, do not forget to tighten the lock nut.

【Adjustment Volumes at One Rotation of Pres. Adj. Screw】

Model Numbers	Adjustment Volumes MPa
YA10/YA16/YA22-B	2.9
YA37-B	3.5
YA10/YA16/YA22-C	5.4
YA37-C	6.5

● Setting of Output Flow

〔Output Flow Adjustment〕

Turn the flow adjustment screw clockwise, the output flow decrease. For adjustment volumes at one rotation of adjustment screw, please refer to the table below. After adjustments, do not forget to tighten the lock nut.

【Adjustment Volumes at One Rotation of Discharge Volume Adj. Screw】

Model Numbers	Adjustment Volumes at One Rotation cm ³ /rev	Min. Adj. Flow cm ³ /rev
YA10-*	1.1	2
YA16-*	1.5	6
YA22-*	2.1	8.5
YA37-B	2.9	10

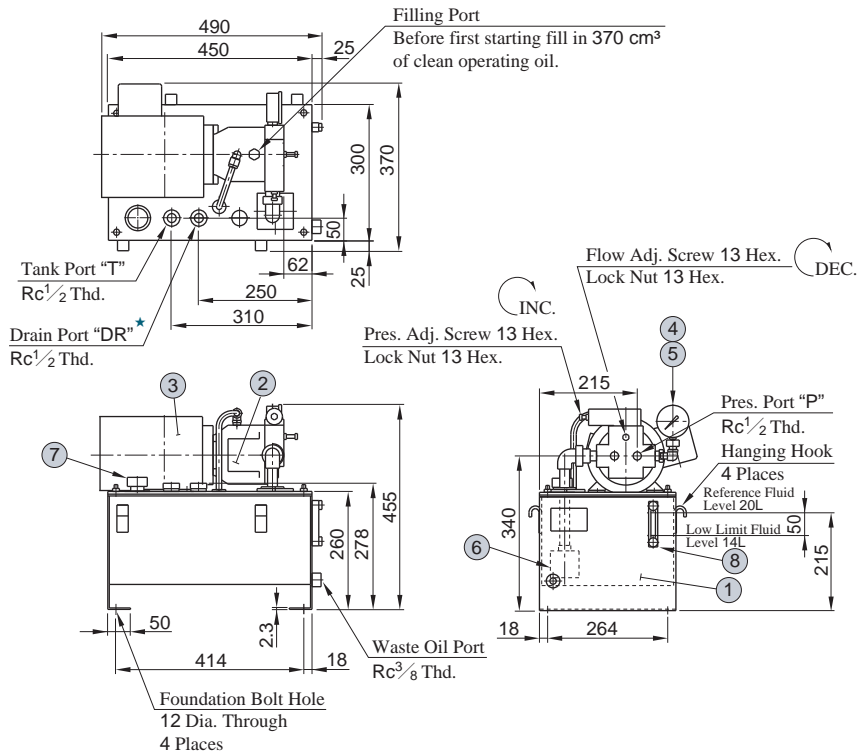
● Return Filter

For return filter installation, please refer to the table below. In case if the return filter not built-in, please install the return filter as much as possible due to keep the machine life longer and show good performance for long time.

【Return Filter Installation】

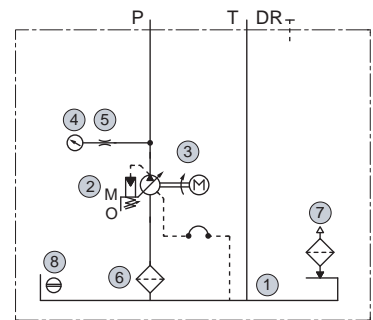
Model Numbers	Return Filter Installation
YA10-B-2 YA16-B-1	Not installed in the unit (Install separately)
YA10-B-3 YA10-B-4 YA10-B-6 YA16-B-2 YA16-B-4 YA16-B-6 YA22-B-6	Not installed in standard models (Can install as option)
Except for above	Built-in

YA10-B-2-0.75-52

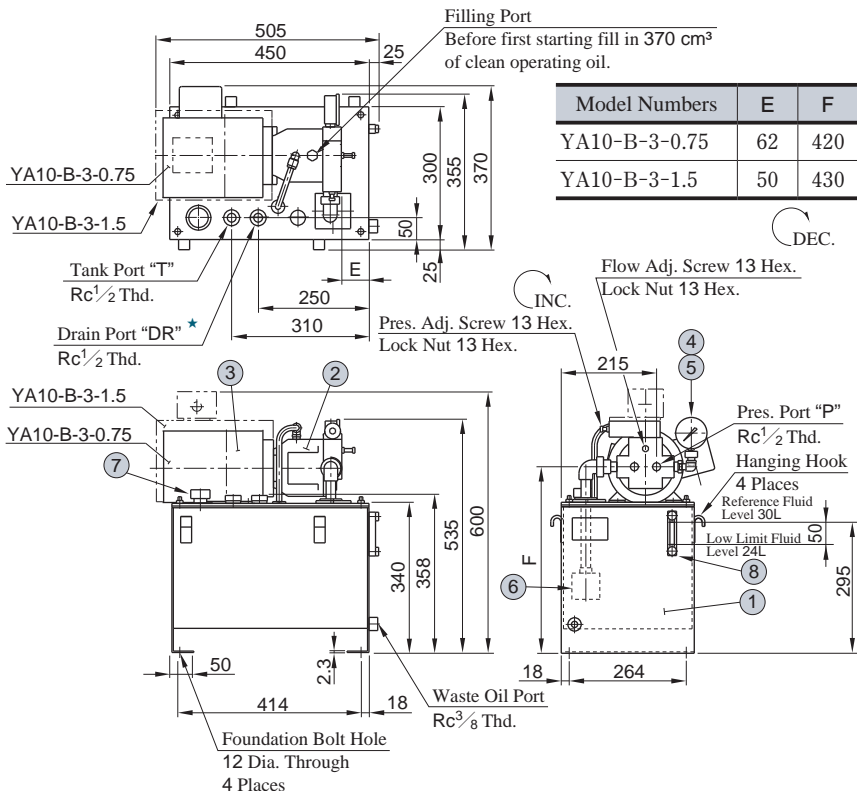


★If Liquid Level Switch Embedded (Le) is chosen as option, it is unable to use this port.

● Hydraulic Circuit



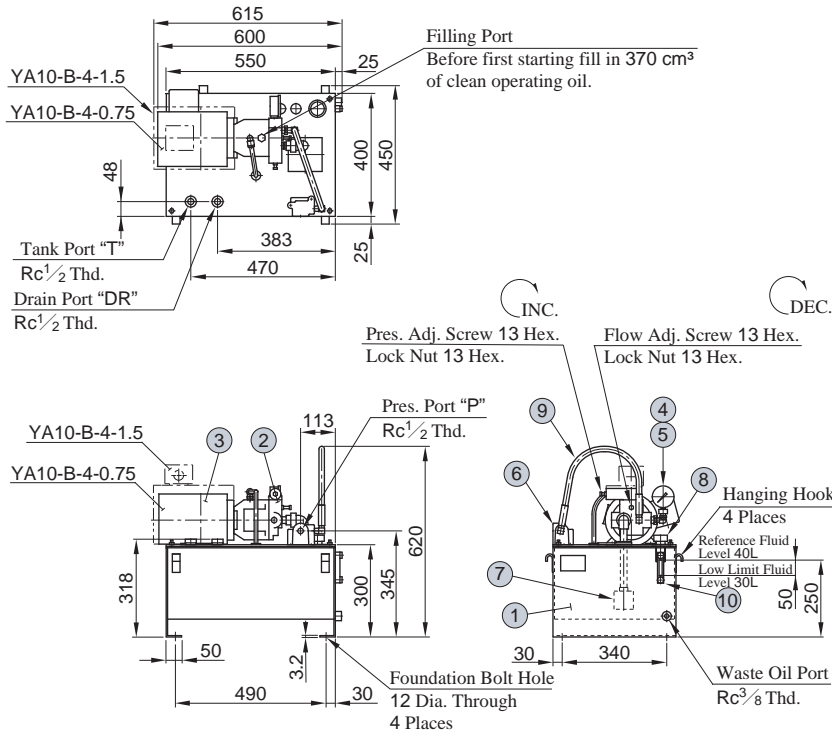
YA10-B-3-0.75-52 · YA10-B-3-1.5-52



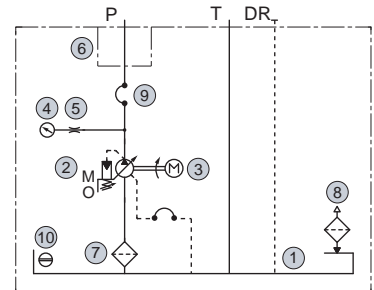
★If Liquid Level Switch Embedded (Le) is chosen as option, it is unable to use this port.

Item	Name
1	Hydraulic Reservoir
2	Pump
3	Electric Motor
4	Pressure Gauge
5	Adapter
6	Suction Strainer
7	Air Breather with Filling Port
8	Oil Level Gauge

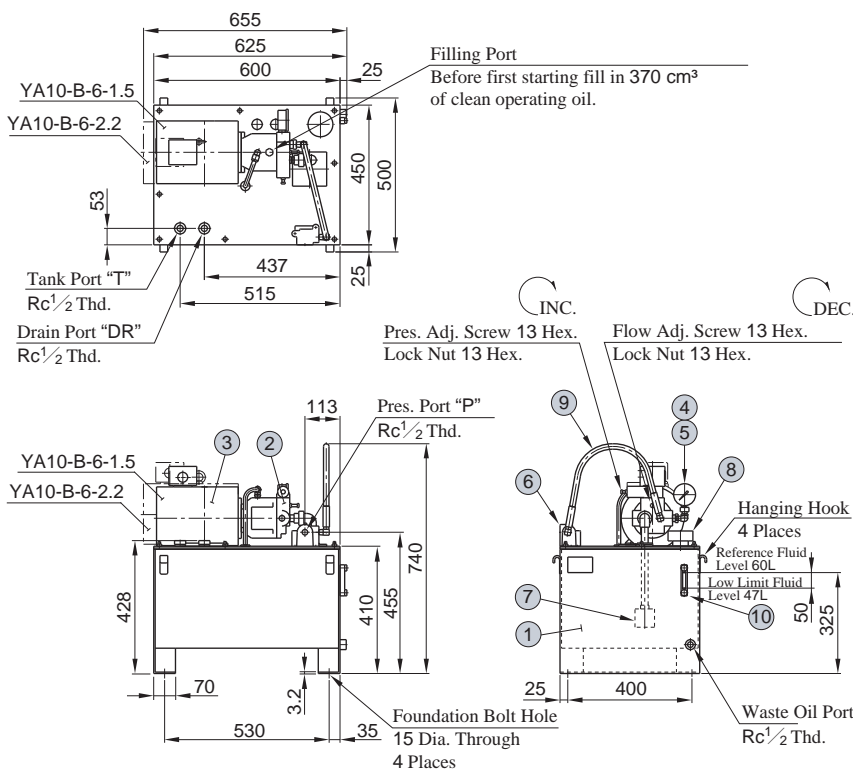
YA10-B-4-0.75-52 · YA10-B-4-1.5-52



● Hydraulic Circuit

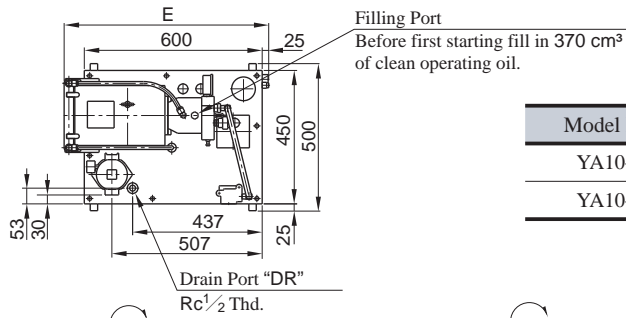


YA10-B-6-1.5-51 · YA10-B-6-2.2-51

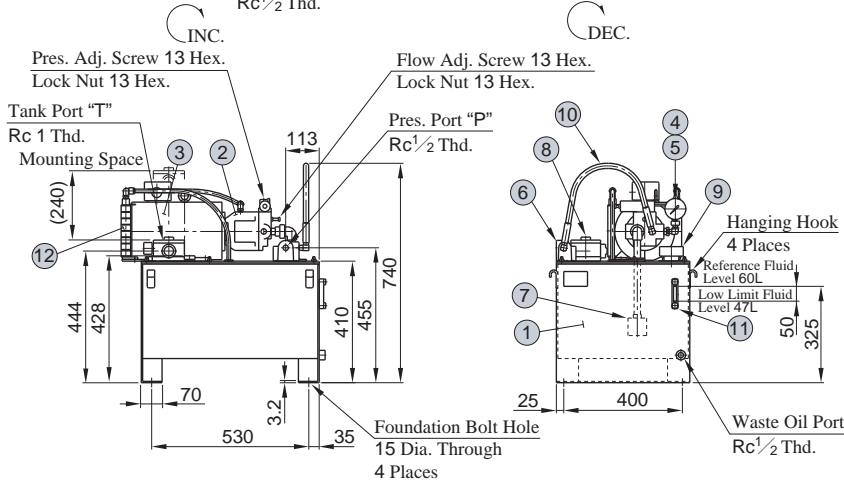


Item	Name
1	Hydraulic Reservoir
2	Pump
3	Electric Motor
4	Pressure Gauge
5	Adapter
6	Port Block
7	Suction Strainer
8	Air Breather with Filling Port
9	High Pressure Resin Hose
10	Oil Level Gauge

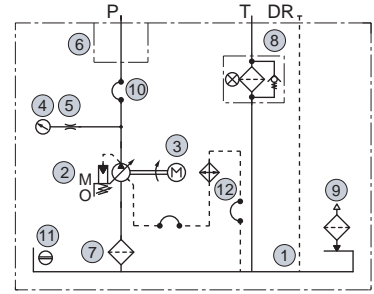
YA10-C-6-2.2-51 · YA10-C-6-3.7-51



Model Numbers	E
YA10-C-6-2.2	690
YA10-C-6-3.7	730

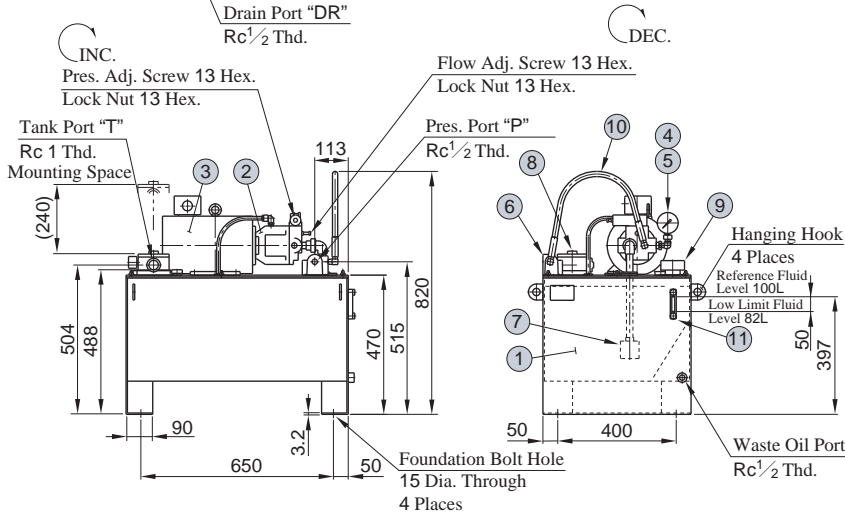
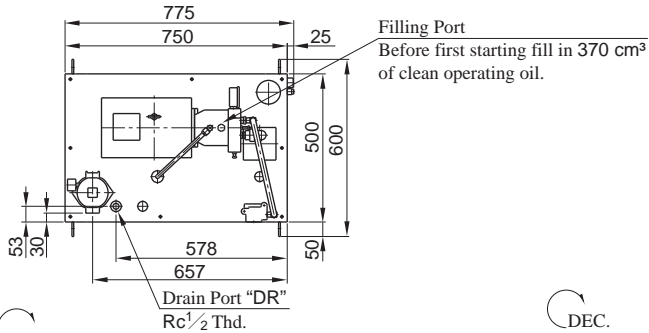


● Hydraulic Circuit

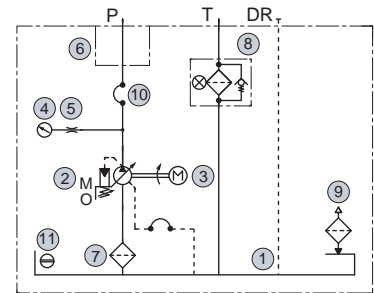


Item	Name
1	Hydraulic Reservoir
2	Pump
3	Electric Motor
4	Pressure Gauge
5	Adapter
6	Port Block
7	Suction Strainer
8	Return Filter
9	Air Breather with Filling Port
10	High Pressure Resin Hose
11	Oil Level Gauge
12	Drain Cooler

YA10-C-10-2.2-51 · YA10-C-10-3.7-51

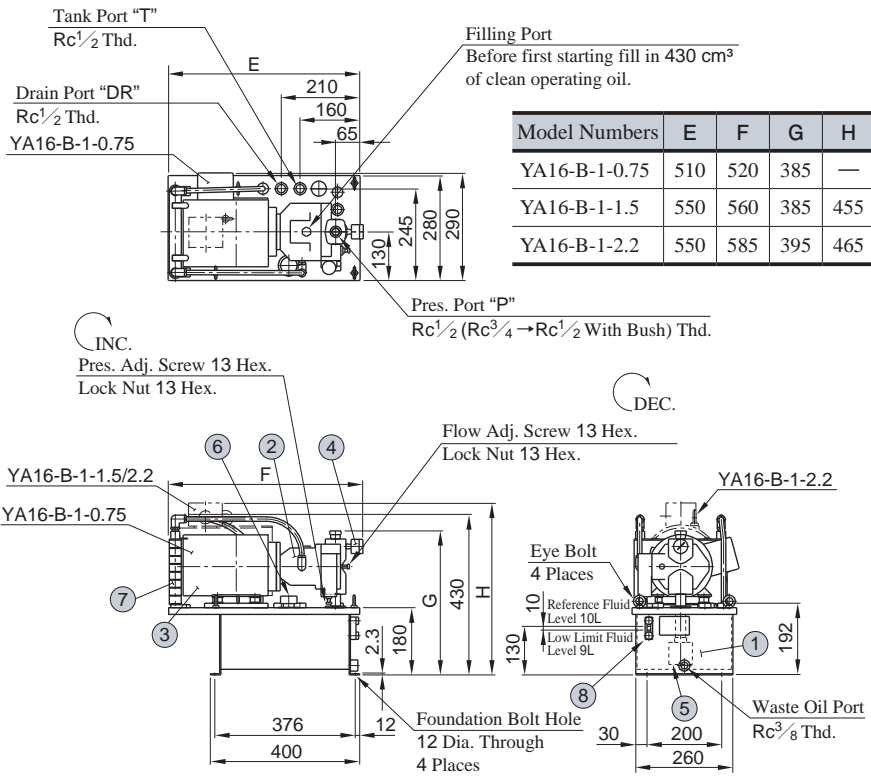


● Hydraulic Circuit

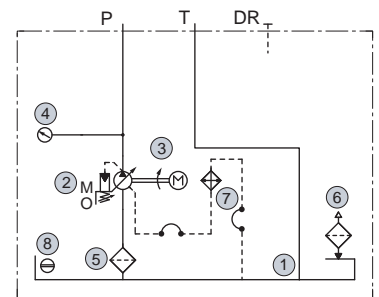


Item	Name
1	Hydraulic Reservoir
2	Pump
3	Electric Motor
4	Pressure Gauge
5	Adapter
6	Port Block
7	Suction Strainer
8	Return Filter
9	Air Breather with Filling Port
10	High Pressure Resin Hose
11	Oil Level Gauge

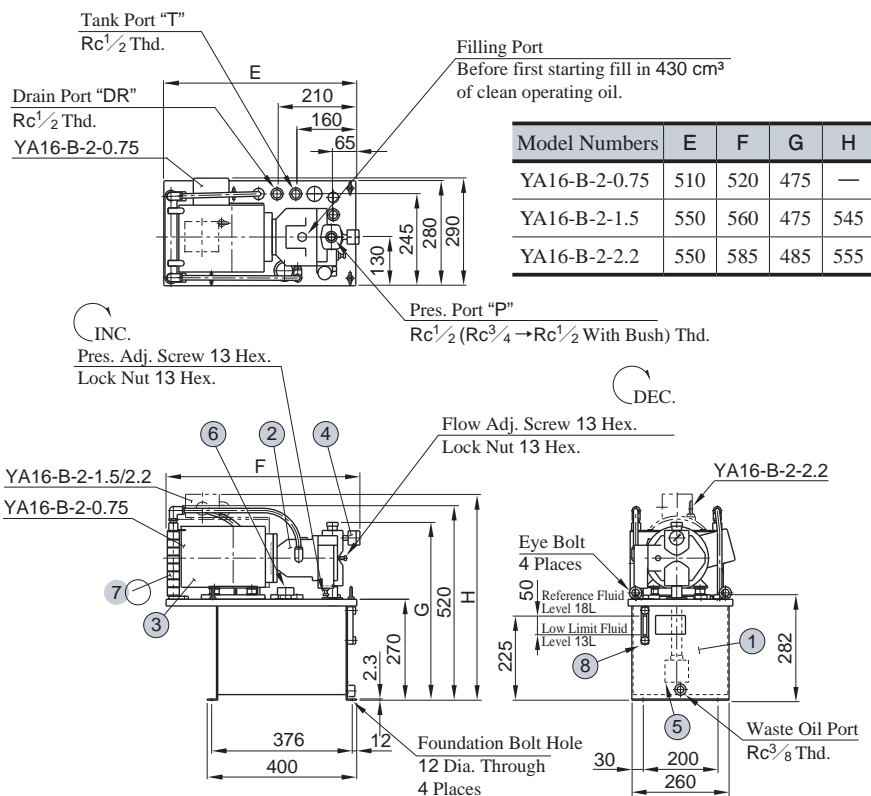
YA16-B-1-0.75-52•YA16-B-1-1.5-50•YA16-B-1-2.2-50



● Hydraulic Circuit

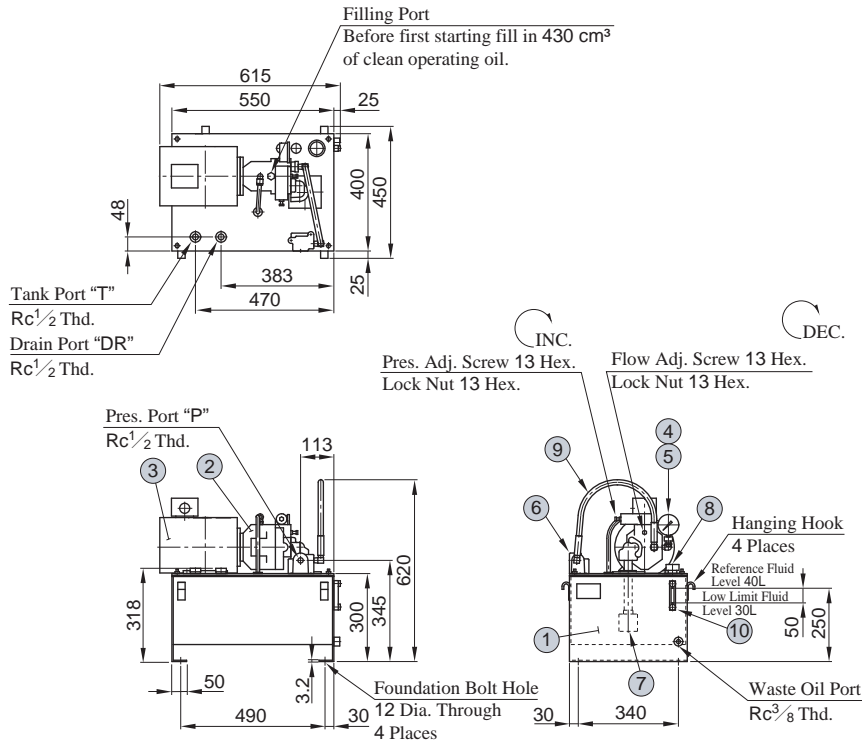


YA16-B-2-0.75-52•YA16-B-2-1.5-50•YA16-B-2-2.2-50

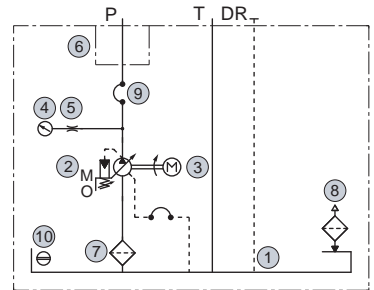


Item	Name
1	Hydraulic Reservoir
2	Pump
3	Electric Motor
4	Pressure Gauge
5	Suction Strainer
6	Air Breather with Filling Port
7	Drain Cooler
8	Oil Level Gauge

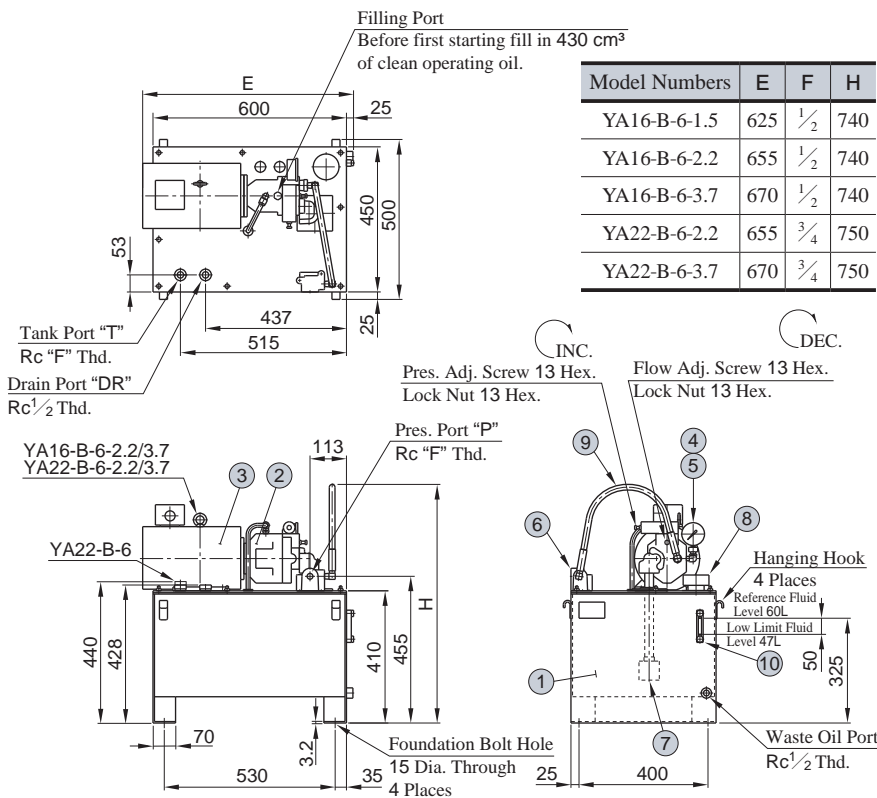
YA16-B-4-1.5-52



● Hydraulic Circuit

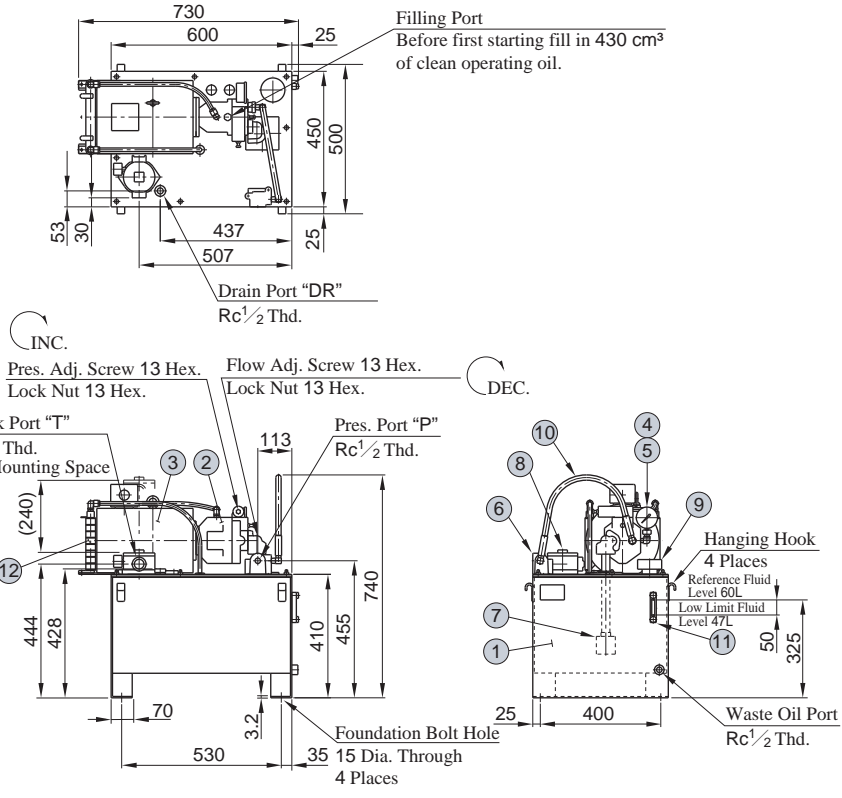


YA16-B-6-1.5-50 · YA16-B-6-2.2-50 · YA16-B-6-3.7-50 YA22-B-6-2.2-50 · YA22-B-6-3.7-50

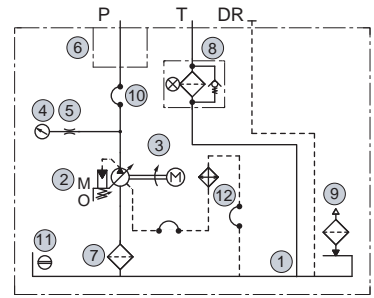


Item	Name
1	Hydraulic Reservoir
2	Pump
3	Electric Motor
4	Pressure Gauge
5	Adapter
6	Port Block
7	Suction Strainer
8	Air Breather with Filling Port
9	High Pressure Resin Hose
10	Oil Level Gauge

YA16-C-6-3.7-50

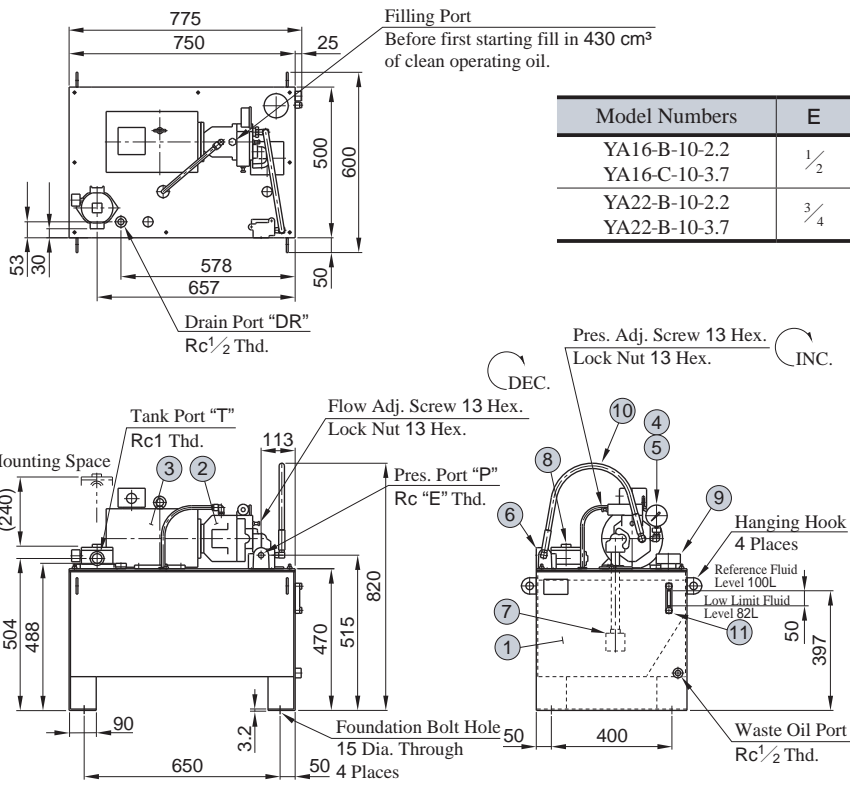


● Hydraulic Circuit



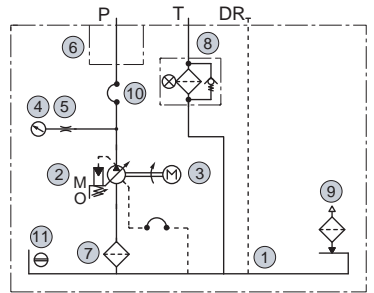
Item	Name
1	Hydraulic Reservoir
2	Pump
3	Electric Motor
4	Pressure Gauge
5	Adapter
6	Port Block
7	Suction Strainer
8	Return Filter
9	Air Breather with Filling Port
10	High Pressure Resin Hose
11	Oil Level Gauge
12	Drain Cooler

**YA16-B-10-2.2-50·YA16-C-10-3.7-50
YA22-B-10-2.2-50·YA22-B-10-3.7-50**



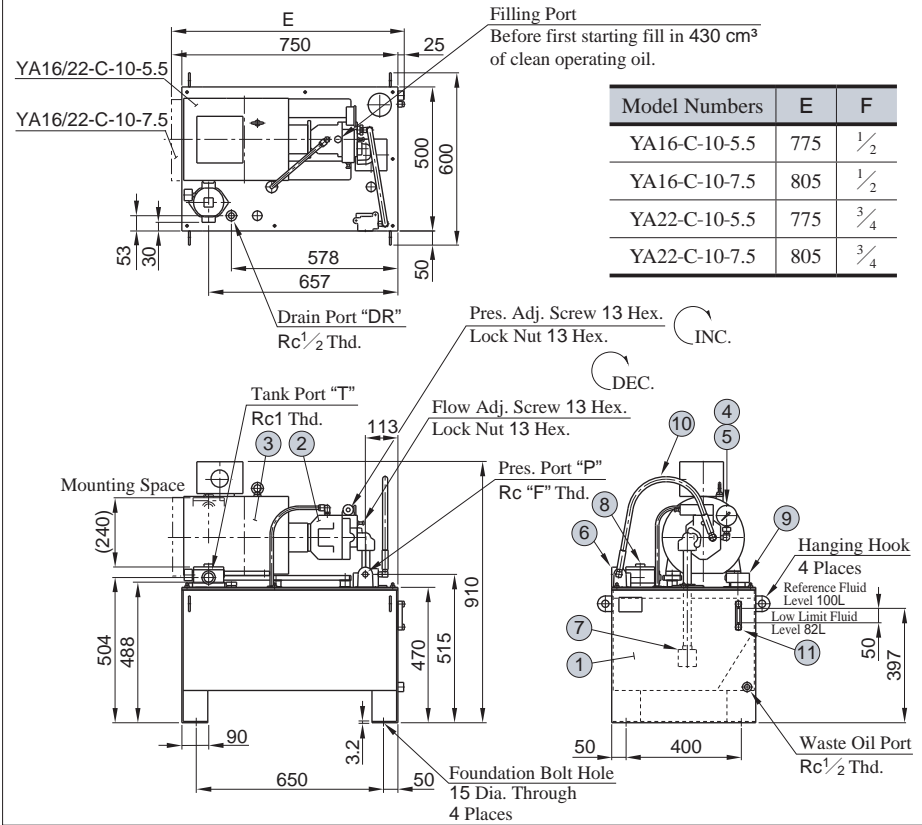
Model Numbers	E
YA16-B-10-2.2	1/2
YA16-C-10-3.7	1/2
YA22-B-10-2.2	3/4
YA22-B-10-3.7	3/4

● Hydraulic Circuit

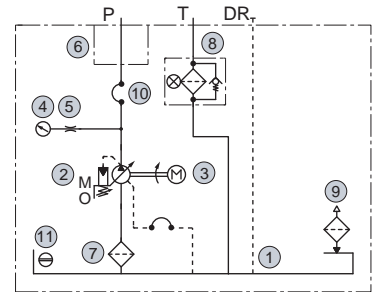


Item	Name
1	Hydraulic Reservoir
2	Pump
3	Electric Motor
4	Pressure Gauge
5	Adapter
6	Port Block
7	Suction Strainer
8	Return Filter
9	Air Breather with Filling Port
10	High Pressure Resin Hose
11	Oil Level Gauge

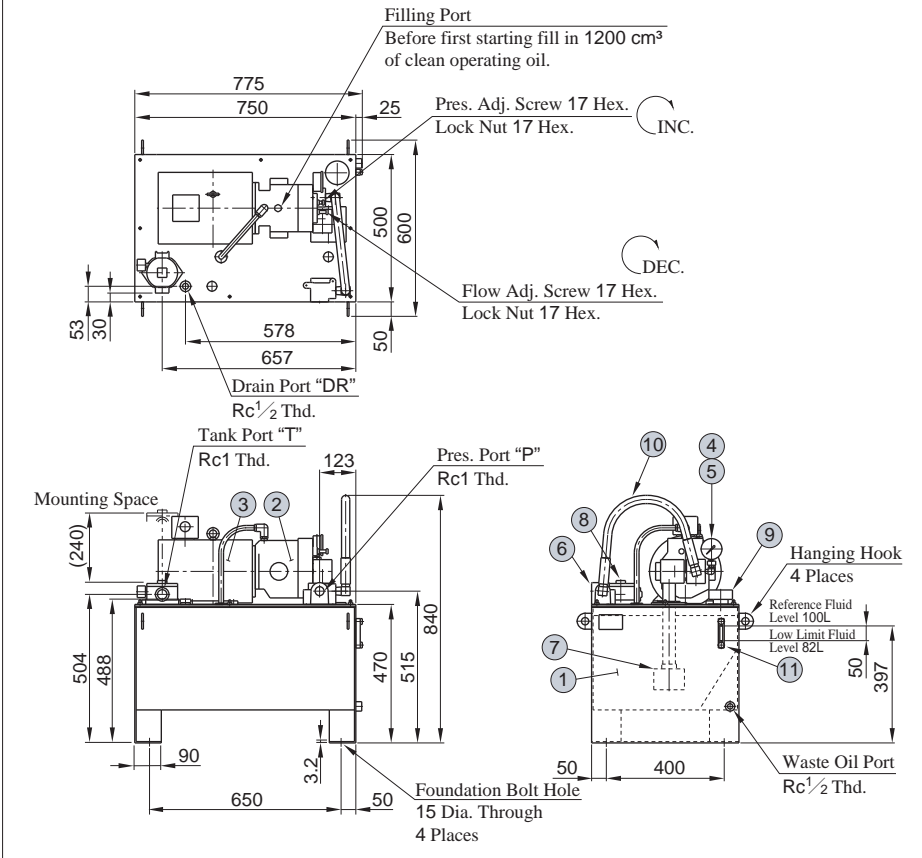
YA16-C-10-5.5-50·YA16-C-10-7.5-50
YA22-C-10-5.5-50·YA22-C-10-7.5-50



● Hydraulic Circuit

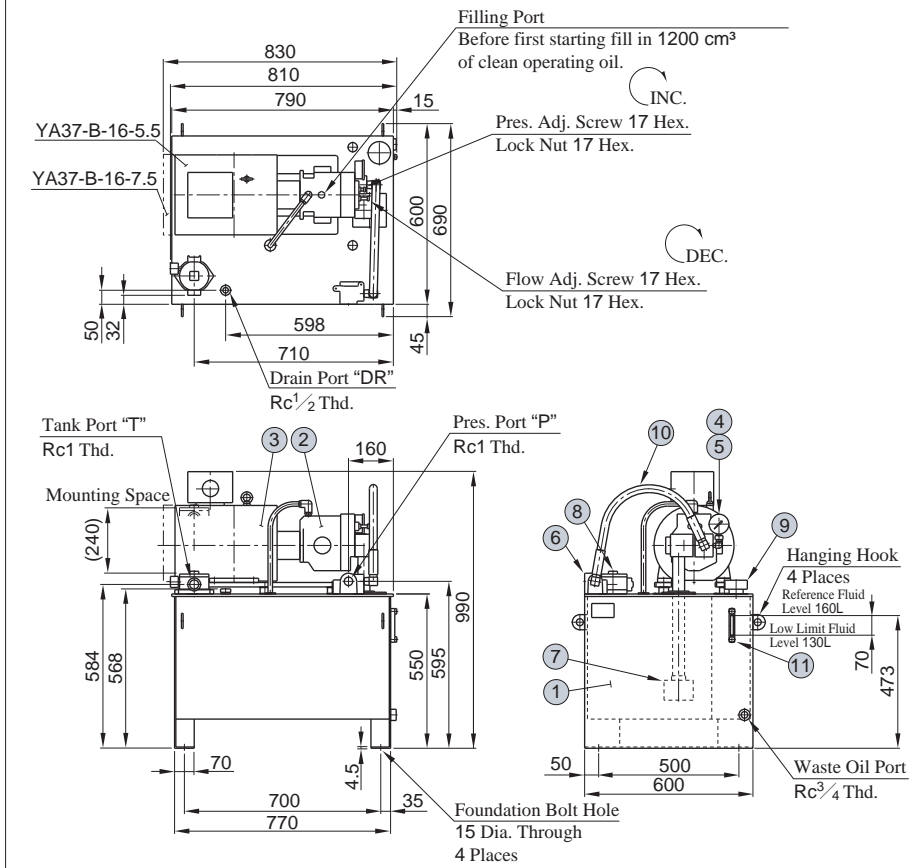


YA37-B-10-3.7-50

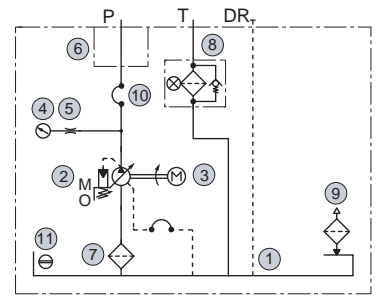


Item	Name
1	Hydraulic Reservoir
2	Pump
3	Electric Motor
4	Pressure Gauge
5	Adapter
6	Port Block
7	Suction Strainer
8	Return Filter
9	Air Breather with Filling Port
10	Resin Hose
11	Oil Level Gauge

YA37-B-16-5.5-50·YA37-B-16-7.5-50



● Hydraulic Circuit



Item	Name
1	Hydraulic Reservoir
2	Pump
3	Electric Motor
4	Pressure Gauge
5	Adapter
6	Port Block
7	Suction Strainer
8	Return Filter
9	Air Breather with Filling Port
10	Resin Hose
11	Oil Level Gauge

■ Interchangeability between Current and New Models

As of YA10 and YA16 type models, the design numbers has changed from 50/51 to 52 due to change of built-in electric motor.

● Applicable Models

Current Model Numbers	New Model Numbers
YA10-B-2-0.75-51	YA10-B-2-0.75-52
YA10-B-3-0.75-51	YA10-B-3-0.75-52
YA10-B-3-1.5-51	YA10-B-3-1.5-52
YA10-B-4-0.75-51	YA10-B-4-0.75-52
YA10-B-4-1.5-51	YA10-B-4-1.5-52
YA16-B-1-0.75-50	YA16-B-1-0.75-52
YA16-B-2-0.75-50	YA16-B-2-0.75-52
YA16-B-4-1.5-50	YA16-B-4-1.5-52

● Change Details

- (1) Change of Built-in Electric Motor 0.75 kW (Design number change to 41)
- (2) Change of Tank [Body or Top Plate]

Due to change of electric motor, the position of hanging hooks and eye bolts near electric motor has changed.

★The built-in electric motor 1.5 kW has no changes, but the design number change to 52 with change of shared tank.

● Interchangeability in Installation

Yes

● Comparison of Current and New Models

(1) Specifications

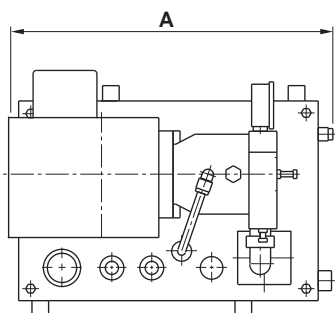
The specifications of current and new models are same except for the mass as below.

Current		New	
Model Numbers	Mass kg	Model Numbers	Mass kg
YA10-B-2-0.75-51	49	YA10-B-2-0.75-52	48
YA10-B-3-0.75-51	54	YA10-B-3-0.75-52	53
YA10-B-4-0.75-51	59	YA10-B-4-0.75-52	58
YA16-B-1-0.75-50	43	YA16-B-1-0.75-52	42
YA16-B-2-0.75-50	45	YA16-B-2-0.75-52	44

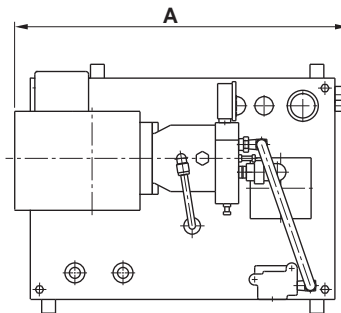
(2) Dimensions

The dimensions of current and new models are same except for below models.

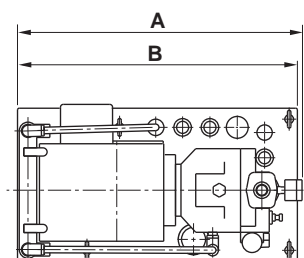
① YA10-B-2-0.75/YA10-B-3-0.75



② YA10-B-4-0.75



③ YA16-B-1-0.75/YA16-B-2-0.75



Current Model Numbers	A	B	New Model Numbers	A	B
YA10-B-2-0.75-51	505	—	YA10-B-2-0.75-52	490	—
YA10-B-3-0.75-51	505	—	YA10-B-3-0.75-52	490	—
YA10-B-4-0.75-51	615	—	YA10-B-4-0.75-52	600	—
YA16-B-1-0.75-50	560	550	YA16-B-1-0.75-52	520	510
YA16-B-2-0.75-50	560	550	YA16-B-2-0.75-52	520	510

По вопросам продаж и поддержки обращайтесь:

Алматы (7273)495-231
 Ангарск (3955)60-70-56
 Архангельск (8182)63-90-72
 Астрахань (8512)99-46-04
 Барнаул (3852)73-04-60
 Белгород (4722)40-23-64
 Благовещенск (4162)22-76-07
 Брянск (4832)59-03-52
 Владивосток (423)249-28-31
 Владикавказ (8672)28-90-48
 Владимир (4922)49-43-18
 Волгоград (844)278-03-48
 Вологда (8172)26-41-59
 Воронеж (473)204-51-73
 Екатеринбург (343)384-55-89

Иваново (4932)77-34-06
 Ижевск (3412)26-03-58
 Иркутск (395)279-98-46
 Казань (843)206-01-48
 Калининград (4012)72-03-81
 Калуга (4842)92-23-67
 Кемерово (3842)65-04-62
 Киров (8332)68-02-04
 Коломна (4966)23-41-49
 Кострома (4942)77-07-48
 Краснодар (861)203-40-90
 Красноярск (391)204-63-61
 Курган (3522)50-90-47
 Курск (4712)77-13-04
 Липецк (4742)52-20-81

Магнитогорск (3519)55-03-13
 Москва (495)268-04-70
 Мурманск (8152)59-64-93
 Набережные Челны (8552)20-53-41
 Нижний Новгород (831)429-08-12
 Новокузнецк (3843)20-46-81
 Новосибирск (383)227-86-73
 Ноябрьск (3496)41-32-12
 Омск (3812)21-46-40
 Орел (4862)44-53-42
 Оренбург (3532)37-68-04
 Пенза (8412)22-31-16
 Пермь (342)205-81-47
 Петрозаводск (8142)55-98-37
 Псков (8112)59-10-37

Ростов-на-Дону (863)308-18-15
 Рязань (4912)46-61-64
 Самара (846)206-03-16
 Санкт-Петербург (812)309-46-40
 Саранск (8342)22-96-24
 Саратов (845)249-38-78
 Севастополь (8692)22-31-93
 Симферополь (3652)67-13-56
 Смоленск (4812)29-41-54
 Сочи (862)225-72-31
 Ставрополь (8652)20-65-13
 Сургут (3462)77-98-35
 Сыктывкар (8212)25-95-17
 Тамбов (4752)50-40-97
 Тверь (4822)63-31-35

Тольятти (8482)63-91-07
 Томск (3822)98-41-53
 Тула (4872)33-79-87
 Тюмень (3452)66-21-18
 Улан-Удэ (3012)59-97-51
 Ульяновск (8422)24-23-59
 Уфа (347)229-48-12
 Хабаровск (4212)92-98-04
 Чебоксары (8352)28-53-07
 Челябинск (351)202-03-61
 Череповец (8202)49-02-64
 Чита (3022)38-34-83
 Якутск (4112)23-90-97
 Ярославль (4852)69-52-93

Россия +7(495)268-04-70

Казахстан +7(7172)727-132

Киргизия +996(312)96-26-47